



# MALONE UNIVERSITY FACT BOOK

## Table of Contents

<b>Section I Student Data</b>	
Enrollment Summary; Student/Faculty Ratio (Tables)	1
Enrollment Summary (Graph)	2
Undergraduate Enrollment Analysis	3
Graduate Enrollment Analysis	4
Students from Stark County High Schools	5
Enrollment by State of Origin	6
International and Minority Student Enrollment	7
Religious Affiliation of Traditional Undergraduates	8
Freshman Class Statistics	9
<b>Section II Faculty Data</b>	
Fall 2009 Faculty FTE Report	10
Distribution of Faculty by School/Department and Highest Degree	11
Distribution of Faculty by School/Department and Rank	12
Full-time Faculty by Highest Degree (Historical)	13
Full-time Faculty by Rank and Gender (Historical)	14
History of Average FT Faculty Years of Service	15
Mean/Median Faculty Salaries by Rank (Historical)	16
<b>Section III Academic Data</b>	
Enrollment by Major: 1-Yr Detail; 10-Yr History	17-18
Total Student Hours by School/Department	19
Summer School Student Hours by School/Department	20
Undergraduate Summer School Statistics	21
Comprehensive Enrollment Summary/Total Individuals Served	21
Library Holdings and Circulation	22
<b>Section IV Retention and Graduation Data</b>	
Longitudinal Retention and Graduation Rates	23
Major Field Analysis by # of (UG) Graduates: 1-Yr Detail; 10-Yr History	24-25
Program Area Analysis by # of Master's Graduates: 10-Yr History	26
Post-Graduation Activities of 2008 Graduates	27-31
<b>Section V Financial Data</b>	
Ten-Year History of Tuition, Room, and Board Charges	32
Total Budget by Fiscal Year	33
Gift Income Information: Malone Fund Income; Total Gift Income	34-35

# **Section I**

## **Student Data**

## ENROLLMENT SUMMARY - Fall 1974 to Fall 2009

### HEADCOUNT

### FTE

YEAR	UNDERGRAD	GRAD	TOTAL	YEAR	UNDERGRAD	GRAD	TOTAL
1974-75	841		841	1974-75	798.0		798.0
1975-76	891		891	1975-76	824.0		824.0
1976-77	896		896	1976-77	832.0		832.0
1977-78	850		850	1977-78	780.0		780.0
1978-79	782		782	1978-79	742.0		742.0
1979-80	772		772	1979-80	740.0		740.0
1980-81	776		776	1980-81	729.0		729.0
1981-82	770		770	1981-82	729.0		729.0
1982-83	872		872	1982-83	749.0		749.0
1983-84	876		876	1983-84	716.0		716.0
1984-85	919		919	1984-85	772.0		772.0
1985-86	1039		1039	1985-86	879.0		879.0
1986-87	1048		1048	1986-87	891.0		891.0
1987-88	1205		1205	1987-88	1028.0		1028.0
1988-89	1325		1325	1988-89	1116.0		1116.0
1989-90	1457		1457	1989-90	1230.0		1230.0
1990-91	1515	46	1561	1990-91	1294.7	29.3	1324.0
1991-92	1607	94	1701	1991-92	1367.5	50.1	1417.6
1992-93	1714	91	1805	1992-93	1462.1	43.9	1506.0
1993-94	1820	109	1929	1993-94	1590.6	53.2	1643.8
1994-95	1876	128	2004	1994-95	1644.4	60.8	1705.2
1995-96	1896	120	2016	1995-96	1709.3	67.0	1776.3
1996-97	1909	192	2101	1996-97	1717.3	117.0	1834.3
1997-98	2013	226	2239	1997-98	1835.7	133.1	1968.8
1998-99	1968	262	2230	1998-99	1834.8	160.7	1995.5
1999-00	1957	244	2201	1999-00	1821.0	155.1	1976.1
2000-01	1951	217	2168	2000-01	1871.9	132.7	2004.5
2001-02	1917	239	2156	2001-02	1822.5	148.0	1970.5
2002-03	1889	257	2146	2002-03	1819.2	167.4	1986.6
2003-04	1943	270	2213	2003-04	1819.1	174.0	1993.1
2004-05	1939	314	2253	2004-05	1856.5	200.9	2057.4
2005-06	1936	357	2293	2005-06	1834.0	237.4	2071.4
2006-07	1968	336	2304	2006-07	1866.0	225.8	2091.8
2007-08	2035	350	2385	2007-08	1903.0	229.9	2132.9
2008-09	2046	409	2455	2008-09	1902.7	279.4	2182.1
<b>2009-10</b>	<b>2208</b>	<b>430</b>	<b>2638</b>	<b>2009-10</b>	<b>2030.8</b>	<b>284.6</b>	<b>2315.3</b>

### STUDENT:FACULTY RATIO SUMMARY - Fall 2003 to Fall 2009

ST: FAC RATIO	FALL '03	FALL '04	FALL '05	FALL '06	FALL '07	FALL '08	FALL '09
	14.0:1	14.1:1	13.9:1	13.7:1	14.1:1	14.0:1	14.8:1

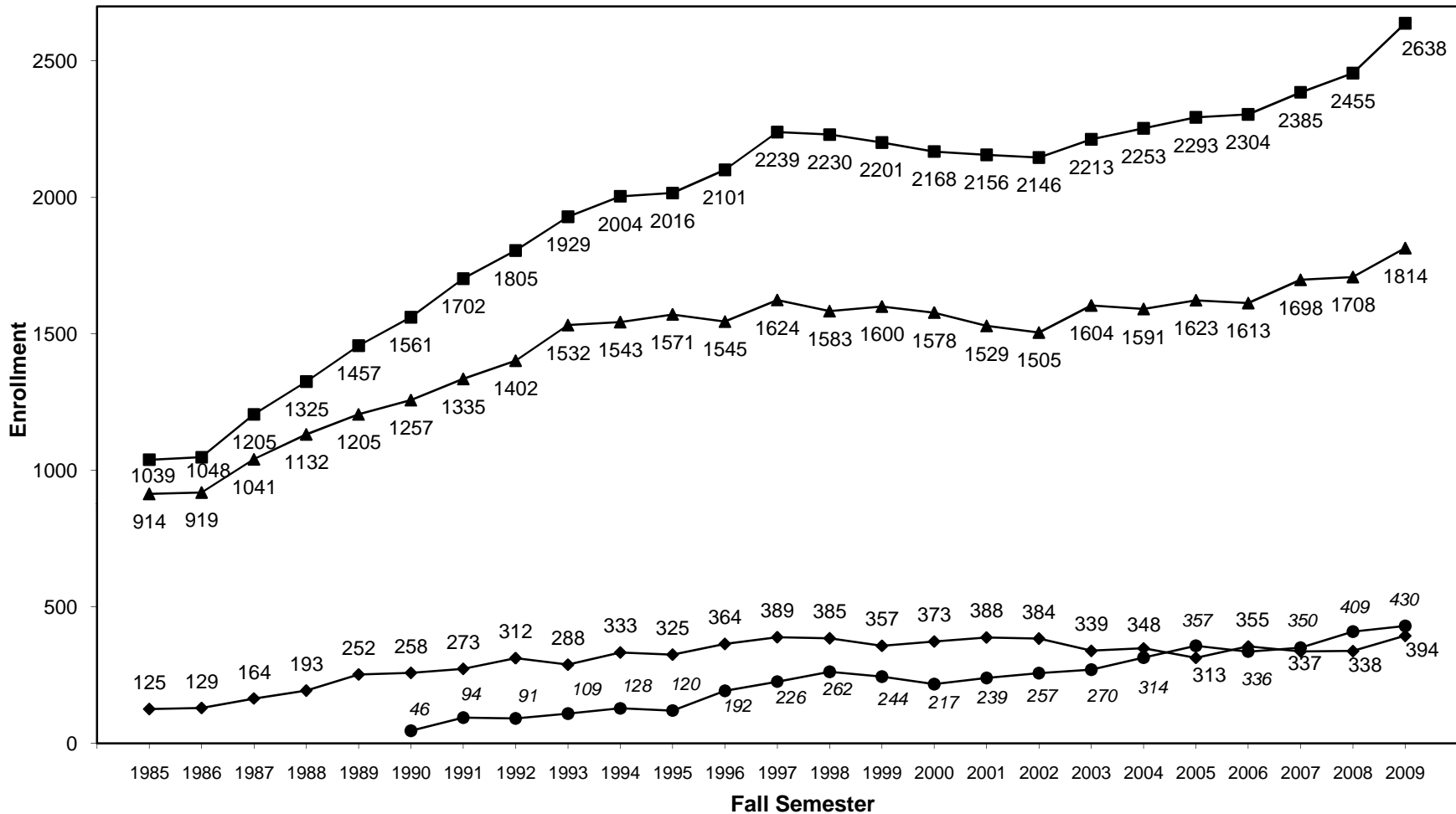
NOTE: The formula used for calculating the above ratio is as follows:

All full-time plus 1/3 of part-time students to all full-time plus 1/3 of part-time faculty.

FT faculty includes those whose classroom teaching comprises 50% or more of their total load hours.

PT faculty does not include Malone personnel who teach in addition to their regular positions, supervisors of student teachers, or instructors of applied music lessons only.

## HISTORY OF FALL ENROLLMENTS BY HEADCOUNT



TOTAL   
  TRADITIONAL UNDERGRADS   
  DEGREE COMPLETION   
  GRADUATE

## UNDERGRADUATE ENROLLMENT ANALYSIS

*Fall Semester*

	<u>2005-06</u>	<u>2006-07</u>	<u>2007-08</u>	<u>2008-09</u>	<u>2009-10</u>
<b>TOTAL ENROLLMENT</b>	1873	1916	1980	2002	2170
<b>BY ACADEMIC CLASSIFICATION</b>					
Freshmen	525	486	551	533	641
Sophomore	363	349	309	361	344
Junior	288	334	325	306	351
Senior	363	359	423	397	366
Unclassified (inc. PSEs/DEs)	76	85	72	111	70
Transient	(for 2005-06 through 2008-09, Transient included with Unclassified)				2
Degreed	(for 2005-06 through 2008-09, Degreed included with Unclassified)				40
MMP-FT (inc. Online beginning 06-07)	230	274	277	256	284
MMP-PT (inc. Portfolio, Project, other)	28	29	23	38	72
BSNDC	55	52	49	44	38
<b>BY STUDENT LOAD*</b>					
Full-time (12 or more hours)	1446	1434	1501	1481	1573
Part-time (less than 12 hours)	169	179	179	227	241
<b>BY SEMESTER HOURS</b>					
Total	23365	23223.5	23868.5	24122	25319.5
Part-time	1168	1210.5	1299.5	1716.5	1685.5
Full-time Equivalent (15/sem)	1557.7	1548.2	1591.2	1608.1	1688.0
FTE - MMP (36/3 trimesters)	235.8	279.3	279.0	262.0	316.4
FTE - BSNDC	39.0	36.8	34.7	31.2	26.4
<b>BY GENDER</b>					
Men	751	770	783	820	894
Women	1177	1198	1246	1226	1314
<b>BY RESIDENCE</b>					
Resident	943	946	989	1003	1105
Men	370	365	394	399	467
Women	573	581	595	604	638
Commuter	985	1022	1040	1043	1103
Men	381	405	389	421	427
Women	604	617	651	622	676

### DETAIL FOR FALL 2009\*

				<b>New</b>		<b>Re-Admits</b>		<b>Continuing</b>	
	<u>Full-time</u>	<u>Part-time</u>	<u>Total</u>	<u>FT</u>	<u>PT</u>	<u>FT</u>	<u>PT</u>	<u>FT</u>	<u>PT</u>
Freshmen	616	25	641	516	10	2	1	98	14
Sophomore	321	23	344	40	4	4	1	277	18
Junior	320	31	351	26	2	1	0	293	29
Senior	304	62	366	0	0	0	0	304	62
Unclassified**	0	70	70	0	53	0	0	0	17
Transient	2	0	2	2	0	0	0	0	0
Degreed	9	31	40	1	7	0	4	8	20
<b>Totals</b>	1572	242	1814	585	76	7	6	980	160

\* No MMP or BSNDC students included

\*\* Includes PSEs, Dual Enrollment Students, Auditors, other students w/o classification

## GRADUATE ENROLLMENT ANALYSIS

*Fall Semester*

### HEADCOUNT by hours

	Full-time*		Part-time	<u>Total</u>
	<u>6 -&gt; 8.5</u>	<u>9 &gt;</u>	<u>.5 -&gt; 5.5</u>	
Business	104	8	21	133
Christian Min.	24	1	9	34
Counseling	91	33	18	142
Education	28	2	41	71
Nursing	50	0	0	50
<b>TOTAL</b>	<b>297</b>	<b>44</b>	<b>89</b>	<b>430</b>

\* Full-time status based on enrollment in 6 hours or more.

### CREDIT HOUR DISTRIBUTION

	<u>.5 -&gt; 5.5</u>	<u>6 -&gt; 8.5</u>	<u>9 &gt;</u>	<u>Total</u>	<u>FTE**</u>
Business	66	628	72	766	85.1
Christian Min.	27	144	9	180	20.0
Counseling	54	547	318	919	102.1
Education	105	170	21	296	32.9
Nursing	0	400	0	400	44.4
<b>TOTAL</b>	<b>252</b>	<b>1889</b>	<b>420</b>	<b>2561</b>	<b>284.6</b>

\*\* Full-time equivalent based on 9 hours.

### BY ENROLLMENT STATUS

	<u>New***</u>	<u>Readmit</u>	<u>Continuing</u>	<u>Total</u>
Business	23	0	110	133
Christian Min.	9	1	24	34
Counseling	36	0	106	142
Education	13	0	58	71
Nursing	27	0	23	50
<b>TOTAL</b>	<b>108</b>	<b>1</b>	<b>321</b>	<b>430</b>

\*\*\* New in Summer 2009 or Fall 2009

### BY GENDER

	<u>Male</u>	<u>Female</u>	<u>Total</u>
Business	83	50	133
Christian Min.	22	12	34
Counseling	26	116	142
Education	10	61	71
Nursing	5	45	50
<b>TOTAL</b>	<b>146</b>	<b>284</b>	<b>430</b>

### **Comprehensive Summary of Graduate Enrollment**

	<u>2003-04</u>	<u>2004-05</u>	<u>2005-06</u>	<u>2006-07</u>	<u>2007-08</u>	<u>2008-09</u>
<b>Graduate Student Enrollment</b>						
Fall	339	350	399	431	454	567
<b>New Students and Re-Admits</b>						
Spring	98	138	141	153	221	194
Summer	<u>248</u>	<u>227</u>	<u>195</u>	<u>313</u>	<u>293</u>	<u>389</u>
<b>Total Individuals Served</b>	<b>685</b>	<b>715</b>	<b>735</b>	<b>897</b>	<b>968</b>	<b>1150</b>

## STUDENTS FROM STARK COUNTY HIGH SCHOOLS

	2005-06	2006-07	2007-08	2008-09	2009-10
<b>CANTON</b>					
McKinley	26	16	21	25	31
Timken	9	6	5	7	13
Central Catholic	8	9	9	6	16
<b>Subtotal</b>	<u>43</u>	<u>31</u>	<u>35</u>	<u>38</u>	<u>60</u>
<b>ALLIANCE</b>					
Alliance	9	4	5	7	11
<b>MASSILLON</b>					
Washington	19	17	16	10	20
<b>NORTH CANTON</b>					
Hoover	29	27	28	30	36
<b>Subtotal</b>	<u>57</u>	<u>48</u>	<u>49</u>	<u>47</u>	<u>67</u>
<b>STARK COUNTY</b>					
Canton South	15	14	16	13	13
East Canton	14	19	17	22	16
Fairless	11	17	23	23	18
Glen Oak	34	39	39	38	44
Heritage Christian	23	17	18	15	14
Jackson	24	32	29	29	29
Lake	29	28	35	31	34
Lake Center Christian	--	--	7	13	20
Louisville	22	19	20	21	17
Marlington	26	22	25	24	26
Massillon Christian	4	4	5	3	2
Minerva	14	17	15	16	12
Northwest	18	13	16	11	16
Perry	32	33	36	45	47
Sandy Valley	15	19	18	16	10
St. Thomas Aquinas	2	3	4	4	2
Tuslaw	13	11	17	16	16
<b>Subtotal</b>	<u>296</u>	<u>307</u>	<u>340</u>	<u>340</u>	<u>336</u>
Home Schooled	<u>37</u>	<u>52</u>	<u>63</u>	<u>70</u>	<u>88</u>
<b>GRAND TOTAL</b>	<b>433</b>	<b>438</b>	<b>487</b>	<b>495</b>	<b>551</b>

Note: PSE students are included. Adult degree-completion students and graduate students are not included.

## STUDENT ENROLLMENT BY STATE

Note: PSE and DE students are included. Adult degree-completion and graduate students are not included.

	2002-03	2003-04	2004-05	2005-06	2006-07	2007-08	2008-09	2009-10
Alabama	0	0	0	0	0	0	0	1
Alaska	2	2	2	2	1	1	1	1
Arizona	0	0	0	1	1	3	3	2
California	0	1	0	2	8	9	10	13
Colorado	2	2	4	2	2	1	0	0
Connecticut	1	1	1	1	0	0	1	4
Delaware	0	1	1	2	2	2	2	1
Florida	3	7	5	6	3	4	39	26
Georgia	1	1	0	0	2	3	4	4
Hawaii	0	0	0	0	0	0	0	3
Idaho	0	0	0	0	0	0	1	1
Illinois	2	4	3	2	3	1	3	5
Indiana	6	5	7	6	6	10	8	6
Iowa	3	3	2	1	0	0	0	0
Kansas	1	0	0	1	0	1	1	0
Kentucky	2	2	1	0	1	1	1	3
Louisiana	0	0	0	0	0	0	0	1
Maine	1	0	0	1	1	1	2	1
Maryland	4	3	2	1	2	5	7	7
Massachusetts	4	4	3	4	3	3	2	1
Michigan	10	11	9	8	12	9	8	19
Minnesota	1	0	0	0	1	2	1	1
Mississippi	1	1	0	0	0	0	0	0
Missouri	1	1	0	0	0	1	1	2
Montana	0	0	0	1	1	1	1	1
Nebraska	0	0	0	0	0	0	0	1
Nevada	0	0	2	0	1	1	1	0
New Hampshire	0	0	1	0	1	1	0	1
New Jersey	4	6	7	6	5	6	3	7
New Mexico	0	0	0	0	0	0	1	0
New York	16	17	25	20	20	19	23	23
North Carolina	0	1	0	0	0	2	8	4
Oklahoma	0	0	0	0	1	0	1	1
Oregon	1	1	0	0	0	0	0	0
Pennsylvania	99	95	99	100	113	126	120	121
Rhode Island	1	0	0	0	0	0	1	0
South Carolina	0	0	1	1	0	0	0	1
South Dakota	0	0	0	0	0	0	0	1
Tennessee	0	0	1	1	0	1	1	1
Texas	1	0	0	0	5	4	2	4
Utah	0	0	1	0	0	0	0	0
Vermont	0	0	0	0	0	0	0	0
Virginia	5	6	6	8	8	5	6	4
West Virginia	5	6	7	7	8	6	7	4
Wisconsin	1	2	2	1	2	2	2	1
<b>Non-Ohio Subtotals</b>	<b>178</b>	<b>183</b>	<b>192</b>	<b>185</b>	<b>213</b>	<b>231</b>	<b>272</b>	<b>277</b>
<b>Ohio</b>	<b>1313</b>	<b>1406</b>	<b>1381</b>	<b>1407</b>	<b>1373</b>	<b>1426</b>	<b>1416</b>	<b>1499</b>
<b>Internationals</b>	<b>12</b>	<b>13</b>	<b>16</b>	<b>21</b>	<b>26</b>	<b>23</b>	<b>20</b>	<b>22</b>
<b>U.S. Citizens Residing Outside the 50 States</b>	<b>2</b>	<b>3</b>	<b>2</b>	<b>2</b>	<b>1</b>	<b>n/a</b>	<b>n/a</b>	<b>n/a</b>
<b>GRAND TOTAL</b>	<b>1505</b>	<b>1605</b>	<b>1591</b>	<b>1615</b>	<b>1613</b>	<b>1680</b>	<b>1708</b>	<b>1798</b>

## INTERNATIONAL STUDENTS

*Undergraduate*

	2002	2003	2004	2005	2006	2007	2008	2009
Argentina	0	1	0	0	0	0	0	0
Australia	1	1	0	0	1	1	1	2
Bangladesh	1	0	0	0	0	0	0	0
Belarus	0	0	0	1	1	0	0	0
Bolivia	0	0	0	1	1	1	1	0
Brazil	0	0	0	0	0	0	0	3
Burundi	0	0	1	1	2	2	2	1
Cameroon	0	0	0	0	1	0	1	0
Canada	1	0	0	0	1	0	0	1
China	0	0	0	1	2	0	1	1
Congo	0	0	0	1	1	1	2	2
Egypt	0	0	0	0	0	0	0	1
Finland	0	0	0	0	0	0	1	1
Ghana	0	0	1	1	1	1	1	0
Greece	0	0	0	0	1	1	0	0
Hungary	0	1	0	0	0	0	0	0
Ireland	0	0	0	0	0	0	1	1
Jamaica	0	0	0	0	0	0	1	1
Kenya	4	2	1	1	1	1	0	0
Liberia	1	1	0	0	0	0	0	0
Mexico	0	0	0	1	1	5	2	2
Oman	1	1	0	0	0	0	0	0
Romania	1	1	0	1	1	1	0	0
Russia	0	0	0	0	0	0	0	1
South Africa	0	0	1	1	1	1	1	1
South Korea	0	0	0	0	0	0	1	1
Spain	0	1	1	1	1	1	0	1
Tanzania	1	1	1	0	0	0	0	0
Trinidad	0	1	1	1	1	1	0	0
United Kingdom	0	1	6	7	7	4	3	2
Venezuela	0	0	0	0	1	1	1	0
Yugoslavia	0	0	1	1	0	0	0	0
Zambia	1	1	1	1	0	0	0	0
<b>Total</b>	<b>12</b>	<b>13</b>	<b>15</b>	<b>21</b>	<b>26</b>	<b>22</b>	<b>20</b>	<b>22</b>

## MINORITY STUDENTS

*Undergraduate*

	2003	2004	2005	2006	2007	2008	2009
Black/Non-Hispanic	70	70	80	76	79	88	120
Hispanic	13	11	13	16	20	23	23
American Indian/Alaskan Native	1	1	2	3	2	3	6
Asian or Pacific Islander	7	8	6	8	10	9	14
Unknown or other	0	0	0	2	1	4	9
<b>Total</b>	<b>91</b>	<b>90</b>	<b>101</b>	<b>105</b>	<b>112</b>	<b>127</b>	<b>172</b>

Note: PSE and DE students are included. Adult degree-completion and graduate students are not included.

## RELIGIOUS AFFILIATIONS

	2002	2003	2004	2005	2006	2007	2008	2009
African Methodist Episcopal	0	1	1	2	0	0	0	1
American Baptist	0	1	2	2	1	1	0	1
Anglican	0	0	1	1	1	3	1	3
Apostolic	6	8	10	7	7	6	7	11
Assembly of God	49	43	40	47	48	50	51	46
Baptist	199	183	180	194	184	183	175	204
Bible	8	8	13	14	13	9	10	6
Brethren	43	49	43	33	48	49	64	55
Catholic	111	112	109	104	98	119	123	121
Christian	63	71	73	66	78	76	75	77
Christian & Missionary Alliance	54	55	57	55	45	52	48	52
Christian Church Disciples of Christ	0	2	3	3	3	2	4	4
Christian Reformed Church in America	0	2	3	4	4	5	7	5
Church of Christ	35	43	38	39	31	28	25	41
Church of God	37	32	32	31	38	34	30	30
Community	1	2	3	3	3	3	5	6
Congregational	2	2	2	2	2	3	3	2
Covenant	1	0	1	1	1	1	0	0
Eastern Orthodox	1	2	2	3	4	1	3	4
Episcopal	4	5	4	6	8	9	5	5
Evangelical	18	23	25	34	26	25	17	28
Free Methodist	12	12	25	29	26	32	23	26
Friends	135	133	135	139	143	132	139	141
Gospel	4	13	10	9	4	2	2	2
Greek Orthodox	1	2	1	0	1	1	1	2
Independent	4	7	8	7	9	12	11	8
Judaism	0	0	0	1	0	0	0	0
Lutheran	46	52	42	42	42	33	38	41
Lutheran Church in America	0	1	1	2	1	1	1	2
Lutheran Church - Missouri Synod	0	1	1	1	1	0	1	1
Lutheran, Evangelical	0	3	3	3	1	0	0	0
Mennonite	36	48	46	51	57	57	55	57
Methodist	4	6	7	6	7	8	5	5
Moravian	3	2	0	0	0	1	1	1
Nazarene	25	31	36	36	37	46	40	47
Pentecostal	32	35	36	36	34	33	29	25
Presbyterian	38	45	51	41	35	33	36	39
Protestant	1	2	3	3	7	4	3	3
Russian Orthodox	0	0	1	1	1	2	2	3
Salvation Army	7	6	5	5	5	5	8	8
Seventh Day Adventist	1	1	2	3	2	1	0	1
Southern Baptist Convention	0	3	3	4	5	9	11	5
United Church of Christ	22	15	14	18	20	18	16	12
United Methodist	122	125	129	116	115	124	135	129
United Presbyterian	1	2	3	2	8	7	10	17
Wesleyan Church	0	13	14	12	10	9	4	7
Wesleyan Methodist	4	2	1	2	1	2	2	2
Non-Denominational	283	305	268	283	294	342	364	364
Other Churches or Religions	21	50	39	24	14	12	9	8
No Church Listed	71	46	64	79	90	95	109	140
<b>Total</b>	<b>1505</b>	<b>1605</b>	<b>1590</b>	<b>1606</b>	<b>1613</b>	<b>1680</b>	<b>1708</b>	<b>1798</b>

Note: PSE and DE students are included. Adult degree-completion and graduate students are not included.

## FRESHMAN CLASS STATISTICS

CLASS SIZE BY ADMISSION STATUS												
Entering class of:	2009	2008	2007	2006	2005	2004	2003	2002	2001	2000	1999	1998
Regular	340	294	289	257	240	275	276	241	231	260	261	233
Honors	101	62	75	51	73	78	73	81	84	84	101	109
Probational (Conditional)	32	35	28	37	48	50	52	33	41	47	52	59
<b>Total New Freshmen</b>	<b>473</b>	<b>391</b>	<b>392</b>	<b>345</b>	<b>361</b>	<b>403</b>	<b>401</b>	<b>355</b>	<b>356</b>	<b>391</b>	<b>414</b>	<b>401</b>
New Transfers	136	97	122	119	118	72	86	97	72	76	64	71

HIGH SCHOOL GRADE POINT AVERAGES BY ADMISSION STATUS												
Entering class of:	2009		2008		2007		2006		2005		2004	
	GPA	N	GPA	N	GPA	N	GPA	N	GPA	N	GPA	N
Regular	3.24	336	3.30	289	3.32	284	3.37	254	3.30	234	3.40	269
Honors	3.91	101	3.88	62	3.88	75	3.86	51	3.85	73	3.91	78
Probational (Conditional)	2.56	32	2.51	35	2.68	28	2.64	35	2.53	47	2.58	49
<b>Total New Freshmen</b>	<b>3.34</b>	<b>469</b>	<b>3.32</b>	<b>386</b>	<b>3.38</b>	<b>387</b>	<b>3.37</b>	<b>340</b>	<b>3.31</b>	<b>354</b>	<b>3.40</b>	<b>396</b>

HIGH SCHOOL CLASS RANK AVERAGES												
Entering class of:	2009		2008		2007		2006		2005		2004	
	%	N	%	N	%	N	%	N	%	N	%	N
For class size > 49												
Top Tenth of Class	22.9	87	17.2	50	22.5	70	23.2	63	19.0	56	27.8	97
Top Quarter of Class	38.7	183	46.0	134	48.6	151	50.7	138	46.8	138	51.0	178
Top Half of Class	75.5	287	75.6	220	81.4	253	79.4	216	76.3	225	79.7	278
<b>Total w/class rank</b>		<b>380</b>		<b>291</b>		<b>311</b>		<b>272</b>		<b>295</b>		<b>349</b>

ACT COMPOSITE AVERAGES BY ADMISSION STATUS												
Entering class of:	2009		2008		2007		2006		2005		2004	
	ACT	N	ACT	N	ACT	N	ACT	N	ACT	N	ACT	N
Regular	21.70	308	22.37	262	21.93	243	21.95	219	21.60	208	21.73	243
Honors	27.73	90	27.75	52	27.76	62	26.93	46	27.72	64	27.61	72
Probational (Conditional)	17.49	32	17.60	30	17.77	26	17.72	32	17.52	44	17.54	41
<b>Total New Freshmen</b>	<b>22.65</b>	<b>430</b>	<b>22.77</b>	<b>344</b>	<b>22.69</b>	<b>331</b>	<b>22.26</b>	<b>297</b>	<b>22.27</b>	<b>316</b>	<b>22.44</b>	<b>356</b>

SAT CRITICAL READING (formerly VERBAL) AVERAGES BY ADMISSION STATUS												
Entering class of:	2009		2008		2007		2006		2005		2004	
	SAT	N	SAT	N	SAT	N	SAT	N	SAT	N	SAT	N
Regular	511.56	64	505.97	72	510.52	77	500.16	64	506.33	60	523.88	80
Honors	622.00	25	627.39	23	603.67	30	599.00	20	607.20	25	627.74	31
Probational (Conditional)		2	433.33	6					408.33	6	441.25	16
<b>Total New Freshmen</b>	<b>539.45</b>	<b>91</b>	<b>529.90</b>	<b>101</b>	<b>534.04</b>	<b>109</b>	<b>517.95</b>	<b>88</b>	<b>527.58</b>	<b>91</b>	<b>538.82</b>	<b>127</b>

SAT MATH AVERAGES BY ADMISSION STATUS												
Entering class of:	2009		2008		2007		2006		2005		2004	
	SAT	N	SAT	N	SAT	N	SAT	N	SAT	N	SAT	N
Regular	495.63	64	517.36	72	502.21	77	502.97	64	491.83	60	514.38	80
Honors	616.00	25	620.87	23	586.67	30	596.50	20	606.40	25	602.58	31
Probational (Conditional)		2	430.00	6					386.67	6	418.75	16
<b>Total New Freshmen</b>	<b>539.45</b>	<b>91</b>	<b>535.74</b>	<b>101</b>	<b>523.85</b>	<b>109</b>	<b>518.86</b>	<b>88</b>	<b>516.37</b>	<b>91</b>	<b>523.86</b>	<b>127</b>

# **Section II**

## **Faculty Data**

## FALL 2009 FACULTY FULL-TIME EQUIVALENT REPORT

<b>SCHOOL Department</b>	<b>FTE-FT</b>	<b>%</b>	<b>FTE-PT (INSIDE)</b>	<b>%</b>	<b>FTE-PT (OUTSIDE)</b>	<b>%</b>	<b>FTE TOTAL</b>
DISTRIBUTED LEARNING	1.42	58.6%	0.25	10.3%	0.75	31.0%	2.42
GEN 100/101/150/460; HON 260/370	4.19	69.6%	1.00	16.6%	0.83	13.8%	6.03
<b>SCHOOL OF ARTS/SCIENCES</b>							
Communication Arts	6.42	81.1%	0.25	3.2%	1.25	15.8%	7.92
Hist, Phil, Social Sciences	7.08	90.4%	0.00	0.0%	0.75	9.6%	7.83
Language and Literature	7.19	50.7%	0.67	4.7%	6.33	44.6%	14.19
Math and Comp Sci	5.03	79.0%	0.58	9.2%	0.75	11.8%	6.36
Music	5.91	44.9%	0.00	0.0%	7.25	55.1%	13.16
Natural Sciences	4.78	58.6%	0.00	0.0%	3.38	41.4%	8.15
Psychology	2.68	64.1%	0.25	6.0%	1.25	29.9%	4.18
Social Work	1.67	91.4%	0.00	0.0%	0.16	8.6%	1.82
Visual Arts	2.67	66.7%	0.00	0.0%	1.33	33.3%	4.00
<b>SCHOOL OF BUSINESS</b>	5.67	91.9%	0.00	0.0%	0.50	8.1%	6.17
<b>SCHOOL OF EDUCATION</b>							
Education	6.45	60.0%	0.73	6.8%	3.56	33.2%	10.74
Health & Human Performance	4.25	63.9%	0.92	13.9%	1.48	22.2%	6.66
<b>SCHOOL OF NURSING</b>	11.80	67.2%	0.92	5.2%	4.84	27.6%	17.55
<b>SCHOOL OF THEOLOGY</b>	6.51	75.8%	0.12	1.4%	1.97	22.9%	8.59
<i>Total Undergraduate</i>	83.71	66.6%	5.69	4.5%	36.38	28.9%	125.77
<b>DEGREE COMPLETION</b>							
MMP	7.58	48.2%	1.68	10.7%	6.47	41.1%	15.74
RN	1.79	81.6%	0.00	0.0%	0.40	18.4%	2.19
<i>Total Degree Completion</i>	9.37	52.3%	1.68	9.4%	6.88	38.4%	17.93
<b>GRADUATE PROGRAMS</b>							
Christian Ministries	2.17	76.5%	0.00	0.0%	0.67	23.5%	2.83
Counselor & Guidance Education	3.67	72.1%	0.00	0.0%	1.42	27.9%	5.08
Education	2.19	72.9%	0.00	0.0%	0.81	27.1%	3.00
MBA	3.45	71.8%	0.00	0.0%	1.35	28.2%	4.80
MSN	1.38	67.6%	0.00	0.0%	0.66	32.4%	2.04
<i>Total Graduate</i>	10.68	71.6%	0.00	0.0%	4.24	28.4%	14.92
<b>TOTAL FACULTY FTE</b>	<b>103.75</b>	<b>65.4%</b>	<b>7.37</b>	<b>4.6%</b>	<b>47.50</b>	<b>29.9%</b>	<b>158.62</b>

NOTES: PT-INSIDE refers to FT or PT employees (> or = 50%) at Malone who have also contracted to teach at least 1 course.

FTE is calculated by summing the total number of teaching load hours per school/department and dividing by 12 (normal semester load).

	FALL '02	FALL '03	FALL '04	FALL '05	FALL '06	FALL '07	FALL '08
<b>HISTORY: TOTAL FACFTE</b>	<b>139.60</b>	<b>145.01</b>	<b>146.95</b>	<b>145.28</b>	<b>150.07</b>	<b>152.90</b>	<b>151.64</b>

DISTRIBUTION OF 2009-10 FULL-TIME FACULTY MEMBERS\*  
BY SCHOOL/Department AND HIGHEST DEGREE

SCHOOL Department	DOCTORATE		FP or TERM**		<=MASTER'S		TOTAL
	#	%	#	%	#	%	
<b>SCHOOL OF ARTS AND SCIENCES</b>							
Communication Arts	3	42.9%	1	14.3%	3	42.9%	7
History, Philosophy, Social Sciences	8	88.9%	0	0.0%	1	11.1%	9
Language and Literature	6	66.7%	0	0.0%	3	33.3%	9
Mathematics and Computer Science	4	80.0%	0	0.0%	1	20.0%	5
Music	4	66.7%	0	0.0%	2	33.3%	6
Natural Sciences	5	83.3%	0	0.0%	1	16.7%	6
Psychology	4	100.0%	0	0.0%	0	0.0%	4
Social Work	2	66.7%	0	0.0%	1	33.3%	3
Visual Arts	1	25.0%	1	25.0%	2	50.0%	4
<b>SCHOOL OF BUSINESS</b>							
	9	81.8%	1	9.1%	1	9.1%	11
<b>SCHOOL OF EDUCATION</b>							
Education	10	90.9%	0	0.0%	1	9.1%	11
Health and Human Performance	3	60.0%	0	0.0%	2	40.0%	5
<b>SCHOOL OF GRADUATE AND PROFESSIONAL STUDIES</b>							
Counselor and Guidance Education	4	100.0%	0	0.0%	0	0.0%	4
MMP	1	14.3%	0	0.0%	6	85.7%	7
<b>SCHOOL OF NURSING</b>							
	5	33.3%	0	0.0%	10	66.7%	15
<b>SCHOOL OF THEOLOGY</b>							
	7	77.8%	2	22.2%	0	0.0%	9
<b>ALL</b>	<b>76</b>	<b>66.1%</b>	<b>5</b>	<b>4.3%</b>	<b>34</b>	<b>29.6%</b>	<b>115</b>

\* Includes faculty on leave or sabbatical, but not administrators or librarians with faculty status.

\*\* Includes first-professional or terminal degree (i.e., J.D., D. Min., M.Div., M.F.A.)

DISTRIBUTION OF 2009-10 FULL-TIME FACULTY MEMBERS\*  
BY SCHOOL/Department AND RANK

SCHOOL Department	PROFESSOR		ASSOCIATE		ASSISTANT		INSTRUCTOR		LECTURER		TOTAL FAC
	#	%	#	%	#	%	#	%	#	%	
<b>SCHOOL OF ARTS AND SCIENCES</b>											
Communication Arts	1	14%	4	57%	0	0%	2	29%	0	0%	7
History, Philosophy, Social Sciences	2	22%	5	56%	2	22%	0	0%	0	0%	9
Language and Literature	4	44%	2	22%	1	11%	2	22%	0	0%	9
Mathematics and Computer Science	2	40%	0	0%	3	60%	0	0%	0	0%	5
Music	3	50%	3	50%	0	0%	0	0%	0	0%	6
Natural Sciences	3	50%	1	17%	1	17%	0	0%	1	17%	6
Psychology	2	50%	2	50%	0	0%	0	0%	0	0%	4
Social Work	1	33%	1	33%	1	33%	0	0%	0	0%	3
Visual Arts	2	50%	0	0%	0	0%	2	50%	0	0%	4
<b>SCHOOL OF BUSINESS</b>											
	7	64%	3	27%	1	9%	0	0%	0	0%	11
<b>SCHOOL OF EDUCATION</b>											
Education	4	36%	4	36%	2	18%	1	9%	0	0%	11
Health and Human Performance	3	60%	1	20%	0	0%	1	20%	0	0%	5
<b>SCHOOL OF GRADUATE AND PROFESSIONAL STUDIES</b>											
Counselor and Guidance Education	0	0%	2	50%	2	50%	0	0%	0	0%	4
MMP	0	0%	0	0%	4	57%	3	43%	0	0%	7
<b>SCHOOL OF NURSING</b>											
	3	20%	7	47%	4	27%	1	7%	0	0%	15
<b>SCHOOL OF THEOLOGY</b>											
	3	33%	3	33%	2	22%	1	11%	0	0%	9
<b>ALL</b>	<b>40</b>	<b>34.8%</b>	<b>38</b>	<b>33.0%</b>	<b>23</b>	<b>20.0%</b>	<b>13</b>	<b>11.3%</b>	<b>1</b>	<b>0.9%</b>	<b>115</b>

\* Includes faculty on leave or sabbatical, but not administrators or librarians with faculty status.

FULL-TIME FACULTY\* BY HIGHEST DEGREE EARNED

YEAR	DOCTORATES	FP or TERM**	<=MASTERS	% DOCTORATES	% DOC/FP/TERM**	TOTAL FACULTY
1992-93	30	1	37	42.9%	44.3%	70
1993-94	31	1	37	43.7%	45.1%	71
1994-95	35	2	38	45.5%	48.1%	77
1995-96	42	2	38	50.6%	53.0%	83
1996-97	44	3	37	51.8%	55.3%	85
1997-98	45	2	40	50.6%	52.8%	89
1998-99	46	3	42	49.5%	52.7%	93
1999-00	55	3	41	55.0%	58.0%	100
2000-01	56	3	46	52.8%	55.7%	106
2001-02	56	5	41	53.8%	58.7%	104
2002-03	59	6	38	57.3%	63.1%	103
2003-04	58	5	37	58.0%	63.0%	100
2004-05	62	7	37	58.5%	65.1%	106
2005-06	68	7	31	64.2%	70.8%	106
2006-07	69	7	35	62.2%	68.5%	111
2007-08	70	5	36	63.1%	67.6%	111
2008-09	75	5	33	66.4%	70.8%	113
<b>2009-10</b>	<b>76</b>	<b>5</b>	<b>34</b>	<b>66.1%</b>	<b>70.4%</b>	<b>115</b>

\* Includes faculty on leave or sabbatical, but not administrators or librarians with faculty status.

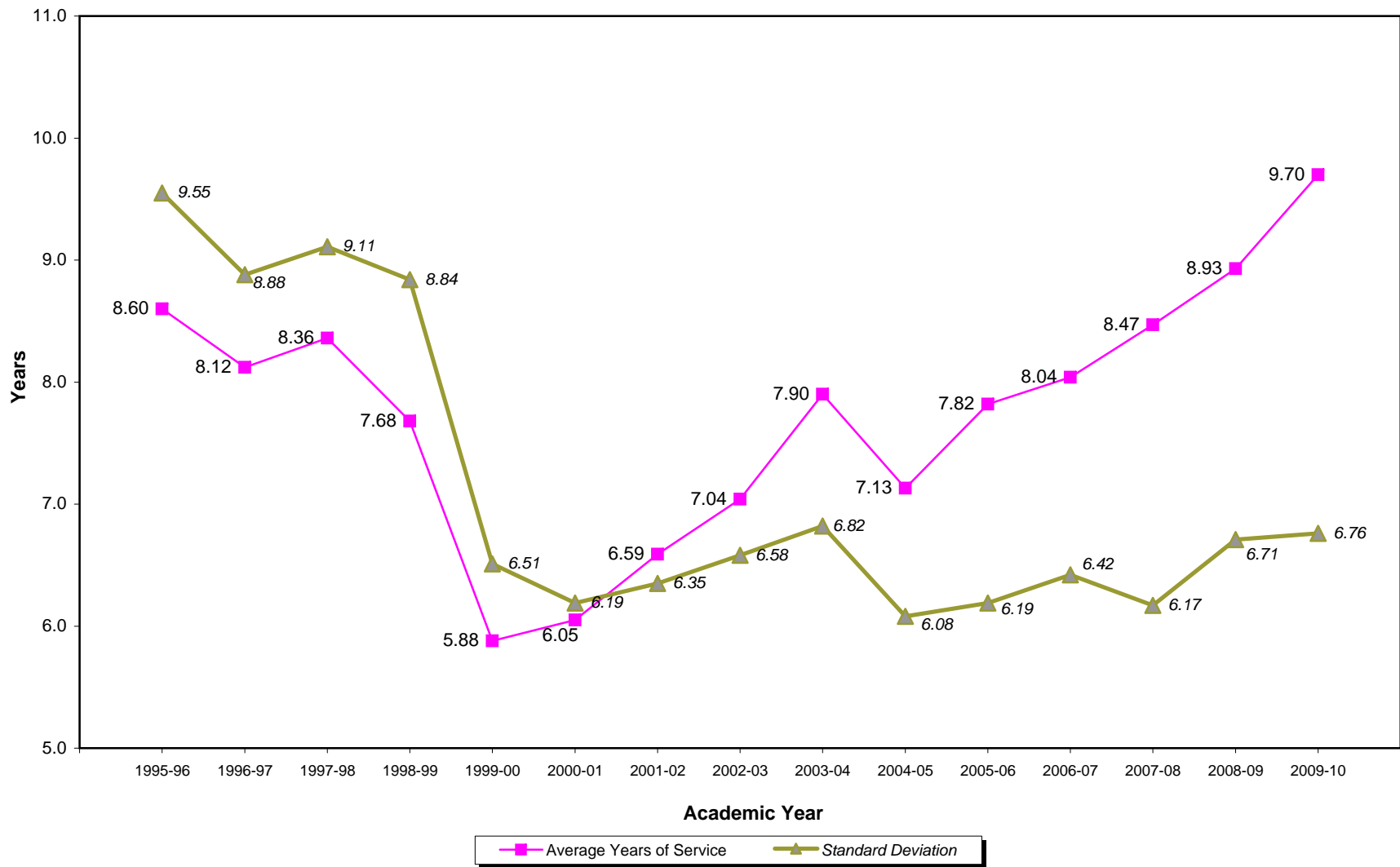
\*\* First-professional or terminal degree (i.e., J.D., D.Min., M.Div., M.F.A.)

## FULL-TIME FACULTY\* BY RANK AND GENDER

ACADEMIC YEAR	2000-01	2001-02	2002-03	2003-04	2004-05	2005-06	2006-07	2007-08	2008-09	2009-10
<b># OF FACULTY</b>	<b>106</b>	<b>104</b>	<b>103</b>	<b>100</b>	<b>106</b>	<b>106</b>	<b>111</b>	<b>111</b>	<b>113</b>	<b>115</b>
<b>Number of:</b>										
Professors	17	21	23	24	23	26	26	30	38	40
Associate Professors	36	31	31	34	39	40	40	37	30	38
Assistant Professors	42	38	34	29	29	25	25	25	31	23
Instructors	2	5	7	8	14	15	20	18	13	13
Lecturers	9	9	8	5	1	0	0	1	1	1
<b>Percentage of Total:</b>										
Professors	16.0%	20.2%	22.3%	24.0%	21.7%	24.5%	23.5%	27.0%	33.6%	34.8%
Associate Professors	34.0%	29.8%	30.1%	34.0%	36.8%	37.7%	36.0%	33.3%	26.5%	33.0%
Assistant Professors	39.6%	36.5%	33.0%	29.0%	27.4%	23.6%	22.5%	22.5%	27.4%	20.0%
Instructors	1.9%	4.8%	6.8%	8.0%	13.2%	14.2%	18.0%	16.2%	11.5%	11.3%
Lecturers	8.5%	8.7%	7.8%	5.0%	0.9%	0.0%	0.0%	0.9%	0.9%	0.9%
<b>Number of:</b>										
Women	45	42	43	42	46	45	49	52	56	57
Men	61	62	60	58	60	61	62	59	57	58
<b>Percentage of Total:</b>										
Women	42.5%	40.4%	41.7%	42.0%	43.4%	42.5%	44.1%	46.8%	49.6%	49.6%
Men	57.5%	59.6%	58.3%	58.0%	56.6%	57.5%	55.9%	53.2%	50.4%	50.4%

\* Includes faculty on leave or sabbatical, but not administrators with faculty status.

### Average Faculty Years of Service



**MEAN ACADEMIC FACULTY SALARIES BY RANK**  
(Base Salaries)

<b>YEAR</b>	<b>PROFESSOR</b>	<b>ASSOCIATE PROFESSOR</b>	<b>ASSISTANT PROFESSOR</b>	<b>INSTRUCTOR</b>	<b>LECTURER</b>
1996-97	45,821	38,285	33,811	29,200	25,977
1997-98	47,186	39,475	34,956	29,950	26,148
1998-99	49,222	40,730	35,112	31,582	26,603
1999-00	50,222	42,024	36,190	33,393	27,548
2000-01	51,493	43,708	38,261	31,570	29,233
2001-02	52,479	44,975	39,083	33,884	29,749
2002-03	53,785	45,477	40,097	34,807	29,856
2003-04	56,145	47,478	42,449	35,876	32,048
2004-05	58,233	49,266	42,617	36,425	NA
2005-06	60,390	51,391	44,460	38,391	NA
2006-07	62,881	53,398	46,949	39,905	NA
2007-08	64,187	55,619	47,671	40,086	NA
2008-09	66,487	56,874	47,868	42,032	NA
<b>2009-10</b>	<b>66,636</b>	<b>55,760</b>	<b>48,287</b>	<b>41,792</b>	<b>NA</b>

**MEDIAN ACADEMIC FACULTY SALARIES BY RANK**  
(Base Salaries)

<b>YEAR</b>	<b>PROFESSOR</b>	<b>ASSOCIATE PROFESSOR</b>	<b>ASSISTANT PROFESSOR</b>	<b>INSTRUCTOR</b>	<b>LECTURER</b>
1996-97	45,260	38,235	33,855	29,500	25,710
1997-98	46,895	39,365	34,815	30,090	25,510
1998-99	48,695	40,830	35,265	31,240	26,285
1999-00	49,280	41,830	35,830	32,380	27,460
2000-01	51,500	43,820	37,540	31,570	28,570
2001-02	51,050	45,140	38,430	33,500	29,440
2002-03	52,070	44,010	39,460	34,670	29,305
2003-04	54,670	46,200	41,440	35,890	31,020
2004-05	57,130	48,290	42,180	36,970	NA
2005-06	59,560	50,050	44,555	38,540	NA
2006-07	62,235	51,945	46,780	40,465	NA
2007-08	62,835	54,340	48,020	41,780	NA
2008-09	65,400	54,930	47,360	43,770	NA
<b>2009-10</b>	<b>65,400</b>	<b>54,930</b>	<b>47,360</b>	<b>43,770</b>	<b>NA</b>

# **Section III**

## **Academic Data**

## UNDERGRADUATE ENROLLMENT by MAJOR

Fall 2009

NOTE: Beginning 2009, +# indicates degreed students pursuing licensure via MT3.

School	Department	Major	Major Sub-totals	Total Enrollment by Department	Total Enrollment by School
<b>School of Arts &amp; Sciences</b>					<b>631</b>
	<b>Communication Arts</b>		83	<b>83</b>	
	<b>History, Philosophy, and Social Sciences</b>			<b>56</b>	
		<i>History</i>	12		
		<i>Integrated Social Studies</i>	19+2		
		<i>Philosophy</i>	4		
		<i>Political Science</i>	19		
	<b>Language and Literature</b>			<b>68</b>	
		<i>English</i>	29		
		<i>Integrated Language Arts</i>	23+3		
		<i>Spanish</i>	6		
		<i>Spanish Education</i>	7		
	<b>Liberal Arts/Individualized Major</b>		11	<b>11</b>	
	<b>Mathematics and Computer Science</b>			<b>46</b>	
		<i>Computer Science</i>	20		
		<i>Mathematics</i>	24+2		
	<b>Music</b>			<b>82</b>	
		<i>Music</i>	7		
		<i>Music Education</i>	33		
		<i>Music Ministry</i>	12		
		<i>Music Production</i>	30		
	<b>Natural Sciences</b>			<b>119</b>	
		<i>Biology</i>	59+1		
		<i>Biology - Clinical Lab Sci.</i>	3		
		<i>Chemistry</i>	6		
		<i>Integrated Science</i>	2		
		<i>Life Science/Chemistry Education</i>	4		
		<i>Physical Science</i>	0+1		
		<i>Zoo and Wildlife Biology</i>	43		
	<b>Psychology</b>		67	<b>67</b>	
	<b>Social Work</b>		55	<b>55</b>	
	<b>Visual Arts</b>			<b>44</b>	
		<i>Art</i>	32		
		<i>Visual Arts Education</i>	10+2		
<b>School of Business</b>					<b>185</b>
		<i>Accounting</i>	43		
		<i>Business Administration</i>	142		
<b>School of Education</b>					<b>377</b>
	<b>Education</b>			<b>226</b>	
		<i>Early Childhood Education</i>	97+4		
		<i>Intervention Specialist</i>	64+12		
		<i>Middle Childhood Education</i>	48+1		
	<b>Health and Human Performance</b>			<b>151</b>	
		<i>Adult Fitness</i>	2		
		<i>Community Health Education</i>	16		
		<i>Exercise Science</i>	56		
		<i>Health Education</i>	4+2		
		<i>Outdoor Leadership</i>	3		
		<i>Physical Education (BS)</i>	16		
		<i>Sport Management</i>	52		
<b>School of Graduate and Professional Studies</b>					<b>358</b>
		<i>Management</i>	358		
<b>School of Nursing</b>					<b>345</b>
		<i>Traditional</i>	307		
		<i>Completion</i>	38		
<b>School of Theology</b>					<b>121</b>
		<i>Bible and Theology</i>	51		
		<i>Educational Ministries</i>	7		
		<i>Sports Outreach Ministries</i>	3		
		<i>Youth Ministry</i>	33		
		<i>Sports/Educational Ministries</i>	2		
		<i>Youth/Educational Ministries</i>	15		
		<i>Youth/Sports Ministries</i>	10		
<b>Undecided/Other</b>					<b>131</b>
			131		

## MAJOR FIELD ANALYSIS BY FALL ENROLLMENT: 10-YEAR HISTORY

NOTE: Beginning 2009, +# indicates degreed students pursuing licensure via MT3.

SCHOOL/DEPARTMENT/MAJOR	2000	2001	2002	2003	2004	2005	2006	2007	2008	2009
<b>School of Arts and Sciences: Communication Arts</b>										
Communication Arts	86	109	113	102	93	98	87	95	97	83
<b>School of Arts and Sciences: HPSS</b>	<b>72</b>	<b>76</b>	<b>78</b>	<b>88</b>	<b>57</b>	<b>63</b>	<b>55</b>	<b>50</b>	<b>60</b>	<b>56</b>
History	17	20	19	25	13	26	18	13	14	12
Integrated Social Studies	10	18	35	44	34	23	21	16	23	19+2
Interdisciplinary Social Science	7	7	2	---	---	---	---	---	---	---
International Affairs	6	5	2	---	---	---	---	---	---	---
Law and Society	20	11	7	---	---	---	---	---	---	---
Philosophy	---	---	---	2	2	4	4	2	5	4
Political Science	---	7	13	17	8	10	12	19	18	19
Social Studies Comprehensive	12	8	---	---	---	---	---	---	---	---
<b>School of Arts and Sciences: Lang &amp; Lit</b>	<b>56</b>	<b>59</b>	<b>58</b>	<b>45</b>	<b>50</b>	<b>54</b>	<b>45</b>	<b>52</b>	<b>67</b>	<b>68</b>
English	35	17	15	11	19	19	18	23	30	29
Integrated Language Arts	6	29	28	24	24	27	19	22	24	23+3
Spanish (BA)	15	10	9	5	3	3	3	1	5	6
Spanish Education (BS)	---	3	6	5	4	5	5	6	8	7
<b>School of Arts and Sciences: Math &amp; CPSC</b>	<b>76</b>	<b>68</b>	<b>51</b>	<b>47</b>	<b>51</b>	<b>40</b>	<b>43</b>	<b>52</b>	<b>40</b>	<b>46</b>
Computer Science	44	40	29	28	26	22	21	26	19	20
Mathematics	32	28	22	19	25	18	22	26	21	24+2
<b>School of Arts and Sciences: Music</b>	<b>51</b>	<b>48</b>	<b>69</b>	<b>54</b>	<b>57</b>	<b>60</b>	<b>57</b>	<b>60</b>	<b>62</b>	<b>82</b>
Music (BA)	8	4	9	7	8	7	5	9	7	7
Music Education (BS)	32	27	33	19	12	15	13	19	28	33
Music Ministry (BA)	---	---	---	---	3	9	7	8	6	12
Music Production/Comm Mus Technology (BA)	11	17	27	28	34	29	32	24	21	30
<b>School of Arts and Sciences: Natural Sciences</b>	<b>69</b>	<b>46</b>	<b>49</b>	<b>50</b>	<b>53</b>	<b>66</b>	<b>71</b>	<b>93</b>	<b>96</b>	<b>119</b>
Biology	46	39	38	39	39	43	31	48	46	59+1
Chemistry	7	4	6	4	3	9	8	5	11	6
Clinical Laboratory Science	4	1	0	1	4	3	3	0	0	3
Integrated Science	12	2	4	5	4	4	3	2	1	2
Life Science/Chemistry Education	---	---	---	---	1	1	4	1	3	4
Physical Science	0	0	1	1	2	0	1	1	0	0+1
Zoo and Wildlife Biology	---	---	---	---	---	6	21	36	35	43
<b>School of Arts and Sciences: Psychology</b>										
Psychology	73	54	47	43	47	49	49	61	61	67
<b>School of Arts and Sciences: Social Work</b>										
Social Work	38	30	41	40	57	55	67	59	61	55
<b>School of Arts and Sciences: Visual Arts</b>	<b>20</b>	<b>20</b>	<b>28</b>	<b>37</b>	<b>38</b>	<b>37</b>	<b>36</b>	<b>35</b>	<b>36</b>	<b>44</b>
Art (BA)	11	10	11	17	15	16	18	20	27	32
Visual Arts Education (BS)	9	10	17	20	23	21	18	15	9	10+2
<b>Liberal Arts or Individualized Major</b>	<b>22</b>	<b>21</b>	<b>25</b>	<b>27</b>	<b>22</b>	<b>25</b>	<b>31</b>	<b>26</b>	<b>14</b>	<b>11</b>
<b>School of Business</b>	<b>176</b>	<b>197</b>	<b>166</b>	<b>144</b>	<b>143</b>	<b>142</b>	<b>152</b>	<b>151</b>	<b>174</b>	<b>185</b>
Accounting	36	41	30	25	24	29	29	36	32	43
Business Administration	140	156	136	119	119	113	123	115	142	142
<b>School of Education: Education</b>	<b>282</b>	<b>300</b>	<b>244</b>	<b>262</b>	<b>260</b>	<b>241</b>	<b>216</b>	<b>199</b>	<b>194</b>	<b>226</b>
Early Childhood Education (BS)	88	153	156	175	166	105	91	75	75	97+4
Elementary Education	144	44	4	1	---	---	---	---	---	---
Intervention Specialist Education	11	37	22	32	36	80	74	76	70	64+12
Middle Childhood Education	39	66	62	54	58	56	51	48	49	48+1
<b>School of Education: HHP</b>	<b>79</b>	<b>68</b>	<b>68</b>	<b>79</b>	<b>107</b>	<b>128</b>	<b>135</b>	<b>129</b>	<b>142</b>	<b>151</b>
Adult Fitness (BA)	---	1	5	9	8	13	12	14	5	2
Community Health Educ (BA)	16	9	8	10	14	23	30	25	24	16
Health Education (BS)	0	2	5	5	5	4	3	3	3	4+2
Outdoor Leadership (BA)	---	1	1	2	4	5	2	2	0	3
Physical Education (BA)	19	15	6	1	---	---	---	---	---	---
Physical Education (BS)	15	16	14	12	29	26	22	17	23	16
Sport Management (BA)	---	2	16	28	30	32	40	38	41	52
Sports Science/Exercise Science (BA)	29	22	13	12	17	25	26	30	46	56
<b>School of Graduate and Professional Studies</b>										
Management (MMP)	283	296	305	262	286	275	310	309	309	358
<b>School of Nursing</b>	<b>166</b>	<b>163</b>	<b>171</b>	<b>190</b>	<b>245</b>	<b>286</b>	<b>300</b>	<b>357</b>	<b>340</b>	<b>345</b>
Degree-Completion	50	46	46	39	50	55	54	51	45	38
Traditional	116	117	125	151	195	231	246	306	295	307
<b>School of Theology</b>	<b>94</b>	<b>96</b>	<b>103</b>	<b>130</b>	<b>120</b>	<b>130</b>	<b>129</b>	<b>120</b>	<b>125</b>	<b>121</b>
Bible and Theology	34	40	44	54	53	45	46	42	48	51
Diversified Ministries	5	1	2	---	---	---	---	---	---	---
Educational Ministries	11	10	9	11	5	4	8	8	8	7
Sports Outreach Ministries	11	7	8	11	6	6	9	6	4	3
Youth Ministry	33	38	40	37	31	50	44	40	41	33
Sports/Educational Ministries	---	---	---	---	2	1	0	0	0	2
Youth/Educational Ministries	---	---	---	8	11	12	6	7	10	15
Youth/Sports Ministries	---	---	---	9	12	12	16	17	14	10
<b>Undecided/Other</b>	<b>194</b>	<b>200</b>	<b>172</b>	<b>291</b>	<b>233</b>	<b>171</b>	<b>116</b>	<b>144</b>	<b>102</b>	<b>131</b>

TOTAL STUDENT HOURS BY SCHOOL/Department: 5-YEAR TREND

	FALL					SPRING					TOTAL YEAR					5-yr %
	04-05	05-06	06-07	07-08	08-09	04-05	05-06	06-07	07-08	08-09	04-05	05-06	06-07	07-08	08-09	
<b>ARTS &amp; SCIENCES</b>																
Comm Arts	1695	1555	1451	1587	1603	1200	1217	1383	1520	1366	2895	2772	2834	3107	2969	2.6%
Hist, PH, SS	2796	2769	2376	2470	2411	2840	2714	2297	2128	2172	5636	5483	4673	4598	4583	-18.7%
Lang & Lit	2509	2639	2247.5	2402	2540	2451	2096	2073	2214	2392	4960	4735	4320.5	4616	4932	-0.6%
Math & Cpsc	695	657	936	1192	1082	667	614	948	987	992	1362	1271	1884	2179	2074	52.3%
Music	704	581.5	550	620	708	514.5	519	576	586.5	830.5	1218.5	1100.5	1126	1206.5	1538.5	26.3%
Nat Sciences	1753	1778	1859	1848	1900	1370	1496	1463	1661	1832	3123	3274	3322	3509	3732	19.5%
Psychology	1163	1084	1264	1355	1343	1018	958	1082	1138	1052	2181	2042	2346	2493	2395	9.8%
Social Work	247	256	353	267	342	416	295	382	432	514	663	551	735	699	856	29.1%
Visual Arts	808	788	687	640	631	924	874	781	689	834	1732	1662	1468	1329	1465	-15.4%
<b>TOTAL</b>											23770.5	22890.5	22708.5	23736.5	24544.5	3.3%
<b>BUSINESS</b>	1917	1981	1745	1684	1650	1746	1637	1716	1578	1626	3663	3618	3461	3262	3276	-10.6%
<b>EDUCATION</b>																
Education	2479	2416	2388	2178	1735	2692	2227	2184	2099	1878	5171	4643	4572	4277	3613	-30.1%
Health & HP	1452	1550.5	1712	1570	1722.5	1463.5	1666.5	1407.5	1584	1364.5	2915.5	3217	3119.5	3154	3087	5.9%
<b>TOTAL</b>											8086.5	7860	7691.5	7431	6700	-17.1%
<b>NURSING</b>	1167	1492	1874	2030	1999	1153	1569	1779	2122	2068	2320	3061	3653	4152	4067	75.3%
<b>THEOLOGY</b>	2485	2678	2821	3011	2957	2187	2392	2969	2995	2380	4672	5070	5790	6006	5337	14.2%
<b>GRADUATE*</b>																
Business	320	333	326	450	782	324	303	400	653	772	644	636	726	1103	1554	141.3%
Christian Ministries	282	315	306	288	246	231	273	237	175	187	513	588	543	463	433	-15.6%
Counseling	474	586	661	672	804	513	562	600	729	753	987	1148	1261	1401	1557	57.8%
Education	582	649	569	428	374	660	848	541	601	417	1242	1497	1110	1029	791	-36.3%
Nursing	193	262	292	265	344	259	348	416	360	378	452	610	708	625	722	59.7%
<b>TOTAL</b>											3838	4479	4348	4621	5057	31.8%
<b>CCCU/BCA Prog.</b>	64	144	112	112	81	142	144	134	51	198	206	288	246	163	279	35.4%
Pittsburgh Sem.	0	0	0	60	15	0	0	0	0	0	0	0	0	60	15	NA
Guatemala	0	0	0	0	0	85	61	85	41	0	85	61	85	41	0	-100.0%
GEN 100/101/150	500	451	442	485	476	30	38	40	26	26	530	489	482	511	502	-5.3%
GEN 460					222				114	297	0	0	0	114	519	NA
Distance Learning	689	531	433	302	416	741	877	625	627	742	1430	1408	1058	929	1158	-19.0%
Dual Enrollment					180					185					365	NA
Honor Sem/Theses	34	28	5	32	30	14	6	24	8	12	48	34	29	40	42	-12.5%

\* Graduate Workshop hours are not included.

**Total= 48649 49259 49552 51067 51862 6.6%**  
**Trad. U.G. FTE= 2981 2992 3013 3108 3143 5.4%**

SUMMER SCHOOL STUDENT HOURS BY SCHOOL/Department: 3-YEAR TREND

	2006-07				2007-08				2008-09				2-yr %
	SSIII06	SSI07	SSII07	TOTAL	SSIII07	SSI08	SSII08	TOTAL	SSIII08	SSI09	SSII09	TOTAL	
<b>ARTS &amp; SCIENCES</b>													
Comm Arts	0	6	0	6	0	30	0	30	0	15		15	150.0%
Hist, PH, SS	21	79	18	118	30	57	0	87	16	60		76	-35.6%
Lang & Lit	0	26	0	26	15	43	13	71	0	71		71	173.1%
Math & Cpsc	0	66	30	96	0	48	24	72	0	87		87	-9.4%
Music	0	7	0	7	0	0	0	0	0	3		3	-57.1%
Nat Sci	0	235	118	353	0	284	196	480	27	310		337	-4.5%
Psychology	0	12	0	12	0	0	0	0	0	6		6	-50.0%
Social Work	0	48	0	48	0	32	0	32	0	44		44	-8.3%
Visual Arts	0	13	0	13	8	3	0	11	0	9		9	-30.8%
<b>TOTAL</b>	<b>21</b>	<b>492</b>	<b>166</b>	<b>679</b>	<b>53</b>	<b>497</b>	<b>233</b>	<b>783</b>	<b>43</b>	<b>605</b>	<b>0</b>	<b>648</b>	<b>-4.6%</b>
<b>BUSINESS</b>													
	0	0	0	0	0	0	0	0	0	0	0	0	0.0%
<b>EDUCATION</b>													
Education	0	3	9	12	0	81	3	84	6	92		98	716.7%
Health & HP	11.5	20.5	5	37	10	39.5	19	68.5	19.5	30		49.5	33.8%
<b>TOTAL</b>	<b>11.5</b>	<b>23.5</b>	<b>14</b>	<b>49</b>	<b>10</b>	<b>120.5</b>	<b>22</b>	<b>152.5</b>	<b>25.5</b>	<b>122</b>	<b>0</b>	<b>147.5</b>	<b>201.0%</b>
<b>NURSING</b>													
	0	11	0	11	0	0	0	0	0	6		6	-45.5%
<b>THEOLOGY</b>													
	41	128	18	187	38	116	18	172	3	70.5		73.5	-60.7%
<b>GRADUATE</b>													
Business	0	353	0	353	0	636	0	636	0	719		719	103.7%
Chr. Min.	0	48	45	93	0	72	24	96	0	75		75	-19.4%
Counseling	0	180	147	327	0	468	0	468	0	456		456	39.4%
Education	0	215	318	533	0	159	270	429	0	108		108	-79.7%
Ed - Workshops	159	36	355	550	276	6	408	690	285	44		329	-40.2%
Nursing	0	411	0	411	0	344	0	344	0	364		364	-11.4%
<b>TOTAL</b>	<b>159</b>	<b>1243</b>	<b>865</b>	<b>2267</b>	<b>276</b>	<b>1685</b>	<b>702</b>	<b>2663</b>	<b>285</b>	<b>1766</b>	<b>0</b>	<b>2051</b>	<b>-9.5%</b>
<b>CCCU Programs</b>													
AuSable	0	16	0	16	0	0	0	0	0	8		0	NA
Distance Lrng.	350	366	540	1256	450	567	579	1596	416	504		920	-26.8%
Gen Ed (GEN)	0	24	2	26	0	0	0	0	0	39		0	NA
<b>GRAND TOTAL</b>	<b>582.5</b>	<b>2327.5</b>	<b>1605.0</b>	<b>4515.0</b>	<b>827.0</b>	<b>2985.5</b>	<b>1563.0</b>	<b>5375.5</b>	<b>778.5</b>	<b>3120.5</b>	<b>0.0</b>	<b>3846.0</b>	<b>-14.8%</b>

- 1) Note that Grad Ed Workshop hours are reported separately from regular Grad Ed hours.
- 2) The hours are reported on a Fiscal Year calendar; hence the inclusion of a Summer III session followed by Summer I and II of the next summer.
- 3) NURSING hours include only traditional BSN hours; no degree-completion nursing or school nurse licensure hours.
- 4) Full-semester summer hours are counted in SSI.

## UNDERGRADUATE SUMMER SCHOOL STATISTICS

(Traditional Programs)

	<u>2004</u>	<u>2005</u>	<u>2006</u>	<u>2007</u>	<u>2008</u>	<u>2009</u>
<b>ENROLLMENT IN SUMMER SESSIONS</b>						
First Five-week Session	272	246	250	232	292	311
Second Five-week Session	197	182	206	218	210	212
Third Four-week Session	<u>124</u>	<u>127</u>	<u>147</u>	<u>161</u>	<u>144</u>	<u>106</u>
<b>Total Enrollment</b>	<u>593</u>	<u>555</u>	<u>603</u>	<u>611</u>	<u>646</u>	<u>629</u>
<b>HOURS ENROLLED BY SESSION</b>						
First Five-week Session	1020.0	908.5	943.0	902.5	1118.5	1255.0
Second Five-week Session	724.0	646.0	780.0	754.0	832.0	835.0
Third Four-week Session	<u>436.5</u>	<u>454.5</u>	<u>460.5</u>	<u>589.0</u>	<u>510.5</u>	<u>410.5</u>
<b>Total Semester Hours</b>	<u>2180.5</u>	<u>2009</u>	<u>2183.5</u>	<u>2245.5</u>	<u>2461</u>	<u>2500.5</u>
<b>CLASSIFICATION OF SUMMER SCHOOL STUDENTS</b>						
1) Fall and Spring enrollees returning for summer school						
Freshmen	86	76	91	105	76	37
Sophomores	78	96	122	140	139	94
Juniors	106	111	161	176	138	104
Seniors	171	187	167	119	220	186
Special	<u>36</u>	<u>38</u>	<u>27</u>	<u>34</u>	<u>23</u>	<u>47</u>
<b>Total</b>	<u>477</u>	<u>508</u>	<u>568</u>	<u>574</u>	<u>596</u>	<u>468</u>
2) New admissions for summer school						
Regular Admission	5	7	4	4	4	18
Conditional Admission	0	0	0	0	0	0
Academic Probation	0	0	0	0	0	0
Special Admission	22	18	21	12	37	13
Transient	<u>10</u>	<u>9</u>	<u>0</u>	<u>10</u>	<u>0</u>	18
<b>Total</b>	<u>37</u>	<u>34</u>	<u>25</u>	<u>26</u>	<u>41</u>	<u>49</u>
3) Readmitted students - Not enrolled Fall or Spring						
<b>Total</b>	10	13	10	11	9	10
<b>TOTAL STUDENTS ENROLLED</b>						
One Session ONLY	304	314	328	358	372	341
Two Sessions or more	152	148	163	173	179	186
Three Sessions or more	31	32	41	45	44	28
All Four Sessions (I, II, III, and Full Summer S	na	<u>2</u>	<u>0</u>	2	2	3
Total Unduplicated Summer Headcount	<u>456</u>	<u>462</u>	<u>492</u>	<u>531</u>	<u>551</u>	<u>527</u>

## COMPREHENSIVE SUMMARY OF ENROLLMENTS

(Fall Semester through Summer III)

	<u>2003-04</u>	<u>2004-05</u>	<u>2005-06</u>	<u>2006-07</u>	<u>2007-08</u>	<u>2008-09</u>
Traditional undergraduate			1788	1794	1849	1853
Degree-completion undergraduate			<u>481</u>	<u>468</u>	<u>486</u>	<u>522</u>
<b>Total Undergraduate Students served</b>	2221	2239	2269	2262	2335	2375
<b>Total Graduate Students served</b>	685	705	733	898	968	1150
<b>TOTAL INDIVIDUALS SERVED</b>	<u>2906</u>	<u>2944</u>	<u>3002</u>	<u>3160</u>	<u>3303</u>	<u>3525</u>

MALONE UNIVERSITY LIBRARY  
HOLDINGS, EXPENDITURES, AND CIRCULATION

	1999-00	2000-01	2001-02	2002-03	2003-04	2004-05	2005-06	2006-07	2007-08	2008-09
Total Hardcopy Volumes	153,475	156,898	158,974	161,899	165,933	169,655	173,231	175,830	178,992	181,420
Govt. Document Hardcopy Volumes	80,383	79,788	74,981	74,852	72,897	72,299	72,889	72,107	72,260	70,024
Total Audiovisual/Microform Items	618,120	593,096	610,028	629,566	664,887	686,992	698,109	695,720	712,712	706,763
<b>Total Items</b>	<b>851,978</b>	<b>829,782</b>	<b>843,983</b>	<b>866,317</b>	<b>903,717</b>	<b>928,946</b>	<b>944,229</b>	<b>943,657</b>	<b>963,964</b>	<b>958,207</b>
Total Library Circulation	44,242	40,981	38,189	38,314	41,967	39,411	34,227	35,262	34,264	28,818
Interlibrary Loans										
Borrowed Items	855	2,902	3,036	3,354	4,172	4,984	5,053	6,560	4,858	4,401
Loaned Items	7,111	5,524	5,724	5,600	6,243	6,353	10,291	5,627	6,560	4,176
Total Library Expenditures	\$856,305	\$891,370	\$918,651	\$945,311	\$994,394	\$995,831	\$1,015,262	\$1,079,982	\$1,117,957	\$1,018,472
Library Expenditures as % of Total Institutional E & G	4.534%	4.559%	4.406%	4.461%	4.521%	4.218%	4.049%	4.026%	3.888%	3.269%
Total Institutional E&G Exp.	<b>\$18,887,065</b>	<b>\$19,550,587</b>	<b>\$20,848,273</b>	<b>\$21,192,891</b>	<b>\$21,994,216</b>	<b>\$23,610,082</b>	<b>\$25,074,482</b>	<b>\$26,823,460</b>	<b>\$28,757,223</b>	<b>\$31,160,016</b>

# **Section IV**

## **Retention and Graduation Data**

## LONGITUDINAL RETENTION AND GRADUATION RATES

FALL OF ENTRY	NEW FT* FRESHMEN	RETENTION			GRADUATION**			
		ENROLLED 2nd Fall	ENROLLED 3rd Fall	ENROLLED 4th Fall	GRADUATED w/in 4 years	GRADUATED w/in 5 years	GRADUATED w/in 6 years	GRADUATED in > 6 years
1991	317/312	217 68.5%	168 53.0%	137 43.2%	92 29.5%	128 41.0%	140 44.9%	144 46.2%
1992	363	251 69.1%	190 52.3%	182 50.1%	117 32.2%	168 46.3%	177 48.8%	182 50.1%
1993	428	280 65.4%	233 54.4%	208 48.6%	112 26.2%	182 42.5%	195 45.6%	202 47.2%
1994	417	267 64.0%	219 52.5%	206 49.4%	130 31.2%	185 44.4%	198 47.5%	204 48.9%
1995	408	274 67.2%	226 55.4%	206 50.5%	134 32.8%	188 46.1%	199 48.8%	202 49.5%
1996	400	268 67.0%	232 58.0%	205 51.3%	141 35.3%	195 48.8%	200 50.0%	209 52.3%
1997	464	345 74.4%	304 65.5%	284 61.2%	208 44.8%	268 57.8%	275 59.3%	284 61.2%
1998	397	295 74.3%	243 61.2%	217 54.7%	152 38.3%	208 52.4%	218 54.9%	220 55.4%
1999	405	286 70.6%	254 62.7%	237 58.5%	159 39.3%	224 55.3%	230 56.8%	237 58.5%
2000	388	287 74.0%	231 59.5%	218 56.2%	157 40.5%	204 52.6%	206 53.1%	212 54.6%
2001	355	250 70.4%	220 62.0%	212 59.7%	144 40.6%	192 54.1%	200 56.3%	202 56.9%
2002	348	262 75.3%	220 63.2%	202 58.0%	148 42.5%	190 54.6%	195 56.0%	197 56.6%
2003	389	293 75.3%	254 65.3%	236 60.7%	173 44.5%	233 59.9%	237 60.9%	
2004	400	300 75.0%	253 63.3%	241 60.3%	181 45.3%	225 56.3%		
2005	357	263 73.7%	225 63.0%	220 61.6%	165 46.2%			
2006	341	267 78.3%	239 70.1%	219 64.2%	9*** 2.6%			
2007	387	290 74.9%	259 66.9%					
2008	389	273 70.2%						
<b>2009</b>	<b>469</b>							

\*In the cases where 2 numbers are shown (##/##), the first includes all Freshmen and the second is Full-time only. The retention statistics are based on the total number; the graduation rates are based on the Full-time number.

\*\*Graduation - includes 2-year and 4-year degrees. Note - A.A. program was discontinued effective 1998-99.

\*\*\*Students who have completed baccalaureate degrees in 3 years or less

**MAJOR FIELD ANALYSIS**  
2009 Graduates per Major  
Undergraduate Students Only

<b>MAJORS</b>	<b>DEC '08 &amp; MAY '09 GRADS</b>	<b>AUG '09 GRADS</b>	<b>TOTAL</b>
Accounting	8	0	8
Adult Fitness	1	2	3
Art	3	1	4
Bible & Theology	12	2	14
Biology	4	2	6
Biology - Clinical Laboratory Science	0	0	0
Business Administration	34	2	36
Chemistry	1	0	1
Commercial Music Technology	1	0	1
Communications Arts	21	2	23
Community Health Education	12	1	13
Computer Science	6	0	6
Early Childhood Education	26	1	27
Educational Ministries	1	0	1
English	9	1	10
Exercise Science	3	3	6
Health Education	2	0	2
History	4	1	5
Individualized Major	0	0	0
Integrated Language Arts	3	0	3
Integrated Science	0	0	0
Integrated Social Studies	1	0	1
Intervention Specialist Education	22	0	22
Liberal Arts	5	1	6
Management (MMP)	104	40	144
Mathematics	9	0	9
Middle Childhood Education	9	0	9
Music	0	0	0
Music Education	0	0	0
Music Ministry	0	0	0
Nursing - Degree-Completion Program BSN	17	5	22
Nursing - Traditional Basic Program BSN	64	0	64
Nursing - LPN to BSN	0	0	0
Outdoor Leadership	0	0	0
Physical Education	5	0	5
Political Science	4	1	5
Psychology	13	0	13
Social Work	16	2	18
Spanish	3	0	3
Spanish Education	0	0	0
Sport Management	5	1	6
Sports Outreach Ministries	0	1	1
Sports/Educational Ministries	0	0	0
Visual Arts Education	1	0	1
Youth Ministry	9	4	13
Youth/Educational Ministries	3	0	3
Youth/Sports Ministries	2	1	3
Zoo and Wildlife Biology	1	0	1
<b>Total Majors Completed in 2008-09</b>	<b>444</b>	<b>74</b>	<b>518</b>

NOTE: Double majors are counted in both major fields.

MAJOR FIELD ANALYSIS BY NUMBER OF GRADUATES: 10-YEAR HISTORY

SCHOOL/DEPARTMENT/MAJOR	2000	2001	2002	2003	2004	2005	2006	2007	2008	2009
<b>School of Arts and Sciences: Communication Arts</b>										
Communication Arts	19	25	26	27	34	22	22	21	20	23
Communication Comprehensive	0	3	1	---	---	---	---	---	---	---
<b>School of Arts and Sciences: Fine Arts</b>										
Art (BA)	2	0	3	1	2	1	5	6	4	4
Art/Visual Arts Education (BS)	2	1	0	2	2	6	3	2	4	1
Commercial Music Technology	3	1	1	2	7	3	2	4	7	1
Music (BA)	1	1	0	0	1	2	1	2	0	0
Music Education (BS)	4	2	3	7	4	5	2	0	2	0
Music Ministry (BA)	---	---	---	---	---	---	1	0	1	0
<b>School of Arts and Sciences: History, Philosophy, and Social Sciences</b>										
History	0	2	6	2	4	6	5	6	6	5
Interdisciplinary Social Science	2	3	3	---	---	---	---	---	---	---
Integrated Social Studies	---	---	1	8	11	10	7	3	4	1
International Affairs	2	1	1	1	---	---	---	---	---	---
Law and Society	4	6	2	---	---	---	---	---	---	---
Political Science	---	---	3	3	4	5	3	2	6	5
Social Studies Comprehensive	1	5	7	---	---	---	---	---	---	---
Urban Studies	0	0	---	---	---	---	---	---	---	---
<b>School of Arts and Sciences: Language and Literature</b>										
English	6	17	3	8	4	6	6	4	8	10
Integrated Language Arts	---	---	2	7	9	2	5	6	5	3
Spanish	2	1	0	2	3	1	1	2	3	3
Spanish Education	---	---	1	1	3	0	2	2	0	0
<b>School of Arts and Sciences: Mathematics and Computer Science</b>										
Computer Science	4	16	11	5	5	4	3	5	10	6
Mathematics	2	10	6	8	4	5	3	5	7	9
<b>School of Arts and Sciences: Natural Sciences</b>										
Biology	6	10	9	4	7	6	7	3	5	6
Chemistry	7	3	1	1	3	1	1	3	1	1
Clinical Laboratory Science	0	0	1	0	0	0	0	1	2	0
Integrated Science	---	---	---	---	2	1	0	0	1	0
Science Comprehensive	0	3	---	---	---	---	---	---	---	---
Zoo and Wildlife Biology	---	---	---	---	---	---	1	1	2	1
<b>School of Arts and Sciences: Psychology</b>										
Psychology	16	13	12	15	15	10	8	8	14	13
<b>School of Arts and Sciences: Social Work</b>										
Social Work	23	13	4	7	5	12	8	17	13	18
<b>Individualized Major</b>										
	---	---	---	---	---	---	2	1	2	0
<b>Liberal Arts</b>										
	5	13	3	7	18	10	13	12	12	6
<b>School of Business</b>										
Accounting	15	14	8	9	8	6	5	9	10	8
Business Administration	47	42	43	41	38	31	36	24	36	36
<b>School of Continuing Studies</b>										
Management (MMP)	170	176	178	227	186	182	175	176	165	144
<b>School of Education: Education</b>										
Early Childhood Education (AA)	0	1	---	---	---	---	---	---	---	---
Early Childhood Education (BS)	---	---	21	30	45	35	32	37	34	27
Elementary Education	67	68	23	3	---	---	---	---	---	---
Intervention Specialist	12	10	7	11	14	14	11	22	19	22
Middle Childhood Education	---	1	13	16	10	13	8	8	14	9
<b>School of Education: Health and Human Performance</b>										
Adult Fitness	---	---	2	2	1	2	3	3	5	3
Community Health Educ (BA)	---	3	3	5	7	4	7	9	11	13
Health Education (BS)	---	3	1	0	1	0	1	2	0	2
Outdoor Leadership (BA)	---	---	0	0	0	0	2	1	0	0
Physical Education (BA)	7	4	2	---	---	---	---	---	---	---
Physical Education (BS)	6	8	0	6	2	5	5	1	2	5
Sport Management	---	---	1	0	3	10	10	9	7	6
Sports Science/Exercise Science	2	3	7	3	1	0	3	4	3	6
<b>School of Nursing</b>										
Degree-Completion	25	30	26	30	23	28	38	31	29	22
Traditional (inc. LPN to BSN)	26	19	22	27	21	25	37	34	61	64
<b>School of Theology</b>										
Bible and Theology	6	8	10	9	16	8	15	13	9	14
Christian Ministries	0	2	---	---	---	---	---	---	---	---
Diversified Ministries	7	3	0	1	---	---	---	---	---	---
Educational Ministries	---	2	1	2	1	1	3	1	1	1
Pre-Seminary	0	---	---	---	---	---	---	---	---	---
Sports Outreach Ministries	---	1	4	2	1	0	0	2	0	1
Sports/Educational Ministries	---	---	---	---	---	1	1	0	0	0
Youth Ministry	4	6	3	7	6	5	8	7	8	13
Youth/Educational Ministries	---	---	---	1	4	1	6	2	0	3
Youth/Sports Ministries	---	---	---	0	0	0	2	3	7	3

Number per year includes Dec., May, and Aug. grads: ex. - 2009 includes Dec. 2008, May 2009, and Aug. 2009.  
 Graduates with double majors are counted in each discipline.

**PROGRAM AREA ANALYSIS BY # OF MASTER'S GRADUATES: 10-YR HISTORY**

<b>GRADUATES BY PROGRAM AREA</b>	<b>2000</b>	<b>2001</b>	<b>2002</b>	<b>2003</b>	<b>2004</b>	<b>2005</b>	<b>2006</b>	<b>2007</b>	<b>2008</b>	<b>2009</b>
<b>Business</b>										
MBA	35	34	44	37	27	20	25	19	17	40
<b>Christian Ministries</b>										
Christian Ldrshp in Sports Min	-	-	-	-	-	-	-	1	0	1
Christian Ministries	3	7	7	6	7	13	10	8	12	5
Family & Youth Ministries	3	2	0	0	1	1	0	0	-	-
Leadership in the Chr. Church	1	1	1	1	2	1	0	3	2	3
Pastoral Counseling	5	2	0	4	2	0	1	-	-	-
<b>Counselor Education</b>										
Clinical Counseling	-	-	-	-	-	-	-	-	-	3
Community Counseling	14	11	1	8	8	5	8	18	6	11
School Counseling	9	8	10	6	8	13	15	15	11	19
<b>Education</b>										
Curriculum and Instruction	4	3	5	2	6	4	22	26	6	5
1 Curr, Instr and Professional Dev	1	2	3	6	2	2	1	4	1	3
Early Childhood Education	1	1	1	disc.*						
Early Childhood Special Educ	2	disc.*								
Instructional Technology	3	11	4	5	2	3	2	6	2	2
2 Intervention Specialist	-	2	4	4	10	14	7	14	9	14
Middle School										
Physical Education and Sport	1	disc.*								
Reading	3	5	2	2	2	3	3	6	6	4
2 Special Education	5	2	-	-	-	-	-	-	-	-
1 Supervision	2	-	-	-	-	-	-	-	-	-
<b>Nursing</b>										
Clinical Nurse Specialist					5	10	1	0	6	2
Family Nurse Practitioner					7	5	13	19	14	13
<b>Totals</b>	<b>92</b>	<b>91</b>	<b>82</b>	<b>81</b>	<b>89</b>	<b>94</b>	<b>108</b>	<b>139</b>	<b>92</b>	<b>125</b>

Number per year includes December, May, and August grads: ex. - 2009 includes Dec 2008, May 2009, and Aug 2009. Graduates with double majors are counted in each discipline.

\* disc. = Discontinued

- 1 By regulation of the Ohio Department of Education, the former core in Supervision has been renamed as Curriculum, Instruction and Professional Development.
- 2 By regulation of the Ohio Department of Education, the former core in Special Education has been renamed as Intervention Specialist.

# MALONE UNIVERSITY

Class of 2008

## Traditional Undergraduate Alumni Status Report – Summary

### General Information

	342	Bachelor's degree
	32	Double majors awarded
67.8%	232	Responding to the survey

### Information Regarding All Traditional Undergraduates Responding to Survey

68.1%	158	Full-time employed in field related to major
10.3%	24	Full-time employed in field outside of major
78.4%	182	Total employed full-time
6.5%	15	Part-time employed in field related to major
12.1%	28	Pursuing graduate or professional degree FT within one year
6.5%	15	Pursuing graduate or professional degree PT within one year
30.6%	71	Pursuing graduate or professional degree within 2-3 years
0%	0	Pursuing another BA/BS
2.6%	6	Still seeking full-time employment
.4%	1	Not seeking employment or further education
<b>90.9%</b>	<b>211</b>	<b>Satisfactorily Occupied *</b>

\* Satisfactorily occupied is defined as those who are employed full-time, employed part-time by choice, employed full-time in the military, continuing education full-time, or not seeking employment.

These statistics have been collected from all traditional undergraduate programs.

A separate report has been prepared for the continuing studies programs, i.e. Management and Nursing

*Prepared by the Career Development Center*

## Traditional Undergraduate Alumni Status Report - Class of 2008

*Employment and Graduate School Information as of August 2009*

Major or Double Major (+)	Grads	# Re- sponding	FT/ In	PT/ In	FT/ Out	Seeking	Not Seeking	Another BA/BS or Cert	Grad Sch FT w/in 1 yr	Grad Sch PT w/in 1 yr	Grad Sch w/in 2-3 yrs
Accounting	2	1	1								
Acct, Bus Adm	9	8	8								1
Adult Fitness	5	3	1		1				1		
Art	3	1			1						
Art, Visual Arts Educ	1	1		1							
Bible & Theology	6	3	2						1		2
Bible & Theo, Ed Min	1	0									
Bible & Theo, Youth Min	1	1				1					
Bible & Theo, Youth/Sport Min	1	1	1								1
Biology	7	6	1		2				3		1
Bio-Clinical Lab Sci	2	0									
Bio, Pre Phys Asst, Spanish	1	1							1		
Business Admin	27	21	14	2	2	1			2		
Bus Admin, Comp Sci	1	0									
Bus Admin, Math	1	1							1		
Chemistry	1	1	1							1	
Comm Music Tech	7	3	1		2						
Communication Arts	19	1							1		
Comm'ty Health Educ	11	9	4		3				2		6
Computer Science	6	5	4	1							
Computer Sci, Math	2	1	1								1
Early Childhood Educ	21	13	10	1	2					1	9
Early Child, Interv Spec	19	14	11	2			1			2	6
English	9	9	3		1	2			3		3
Exercise Science	2	0									
Found Biomedical Studies	1	0									
History	3	2			2						1
History, Poli Sci	3	2	2								2
Integrated Lang Arts	5	5	2	2		1				1	3
Integrated Science	1	0									
Integrated Soc Studies	5	4	4								2
Intervention Spec	5	3	3								2
Liberal Arts	11	7	6						1		4
Liberal Arts, Spanish	1	1			1						1
Math Educ	3	3	2						1		
Mathematics	1	1				1					
Math, Comp Sci	1	0									
Middle Childhood Educ	13	5	5							2	3
Music Ministry	1	1		1							1
Nursing	60	52	52							4	10
Physical Education	2	2		2							
Political Science	3	2	1		1						1
Psychology	15	9	3		4				2	2	4
Social Work	13	9	6						3		2
Sport Management	9	6	1		2				3		1
Visual Arts Educ	4	2	2							1	1
Youth Ministry	9	7	3	2					2		2
Youth & Sports Min	6	5	4	1						1	1
Zoo Biology	2	1							1		
<b>TOTAL</b>	<b>342</b>	<b>232</b>	<b>158</b>	<b>15</b>	<b>24</b>	<b>6</b>	<b>1</b>	<b>0</b>	<b>28</b>	<b>15</b>	<b>71</b>
Percentages		67.8	68.1	6.5	10.3	2.6	0.4	0.0	12.1	6.5	30.6

# MALONE UNIVERSITY

*Class of 2008*

## Degree Completion Alumni Status Report – Summary

### General Information

	153	Management graduates
	30	Nursing graduates
	183	Total all degree completion graduates
53.6%	98	Number responding to the survey

### Information Regarding All Responding to Survey

82.7%	81	Full-time employed in field related to major
12.2%	12	Full-time employed in field outside of major
94.9%	93	Total Employed Full-time
1%	1	Part-time employed in field of major (by choice)
3.1%	3	Pursuing graduate or professional degree FT within one year
33.7%	33	Pursuing graduate or professional degree PT within one year
32.7%	32	Pursuing graduate or professional degree within 2-3 years
1%	1	Pursuing another BA/BS degree
21.4%	21	Promoted as a result of completing degree
52%	51	Seeking advancement opportunities with current employer
26.5%	26	Seeking advancement opportunities with another employer
0%	0	Seeking full-time employment
<b>100%</b>	<b>98</b>	<b>Satisfactorily Occupied *</b>

\* Satisfactorily occupied is defined as those who are employed full-time in a field related to their major, employed full-time in a field outside of their major, employed full-time in the military, continuing education, or not seeking employment.

These statistics have been collected from degree-completion graduates in Management and Nursing.

*Prepared by the Career Development Center*

# MALONE UNIVERSITY

*Class of 2008*

## Graduate Programs Alumni Status Report – Summary

### General Information

	15	Master of Arts in Christian Ministries graduates
	41	Master of Arts in Education graduates
	16	Master of Business Administration graduates
	20	Master of Science Nursing
	<b>92</b>	Total all Masters graduates
57.6%	53	Number responding to the survey

### Information Regarding All Responding to Survey

88.7%	47	Full-time employed in field related to major
7.5%	4	Full-time employed in field outside of major
96.2%	<b>51</b>	Total Employed Full-time
32.1%	17	Promoted as a result of completing degree
20.8%	11	Seeking advancement opportunities with current employer
15.1%	8	Seeking advancement opportunities with another employer
	2	Part-time employed in field of major (by choice)
	0	Pursuing further education
	0	Not seeking employment or further education
<b>100%</b>	<b>53</b>	Satisfactorily Occupied *

\* Satisfactorily occupied is defined as those who are employed full-time in a field related to their major, employed full-time in a field outside of their major, employed full-time in the military, continuing education, or not seeking employment.

These statistics have been collected from all graduate programs.

*Prepared by the Career Development Center*

## Malone University Degree Completion Alumni Status Report – Class of 2008

### *Employment and Graduate School Information as of August 2009*

Major	Grads	Responses	FT/In	PT/In	FT/Out	Seeking	Another BA/BS	Grad School FT w/in 1yr	Grad School PT w/in 1 yr	Grad School w/in 2-3 yrs
Management	153	80	66		12		1	1	23	29
Nursing	30	18	15	1				2	10	3
<b>TOTAL</b>	<b>183</b>	<b>98</b>	<b>81</b>	<b>1</b>	<b>12</b>		<b>1</b>	<b>3</b>	<b>33</b>	<b>32</b>
Percentage		53.6%	82.7		1		1	3.1	33.7	32.7

## Malone University Graduate Programs Alumni Status Report – Class of 2008

### *Employment and further education Information as of August 2009*

DEGREE PROGRAM	GRADS	RESPONSES	FT/IN	PT/IN	FT/OUT	PROMOTED	Further Edu	Not Seeking
<b>Graduate Business Admin</b>								
MBA	16	14	14			4		
<b>Graduate Christian Min</b>								
Christian Ministries	12	7	3		4			
Leadership Christian Chu	3	1	1					
<b>Graduate Counseling</b>								
Community Counseling	6	5	5			1		
School Counseling	11	4	4					
<b>Graduate Education</b>								
Curriculum & Instruction	6	1	1					
Curr, Instruc, & Prof Dev	1	0						
Instructional Technology	2	2	2					
Intervention Specialist	9	7	7			4		
Reading	6	4	4			2		
<b>Graduate Nursing</b>								
Clinical Nurse Specialist	6	3	2	1		2		
Family Nurse Practitioner	14	5	4	1		4		
<b>TOTAL</b>	<b>92</b>	<b>53</b>	<b>47</b>	<b>2</b>	<b>4</b>	<b>17</b>		
Percentage		<b>57.6%</b>	<b>88.7</b>	<b>3.8</b>	<b>7.5</b>	<b>32.1</b>		

*Prepared by the Career Development Center*

# **Section V**

## **Financial Data**

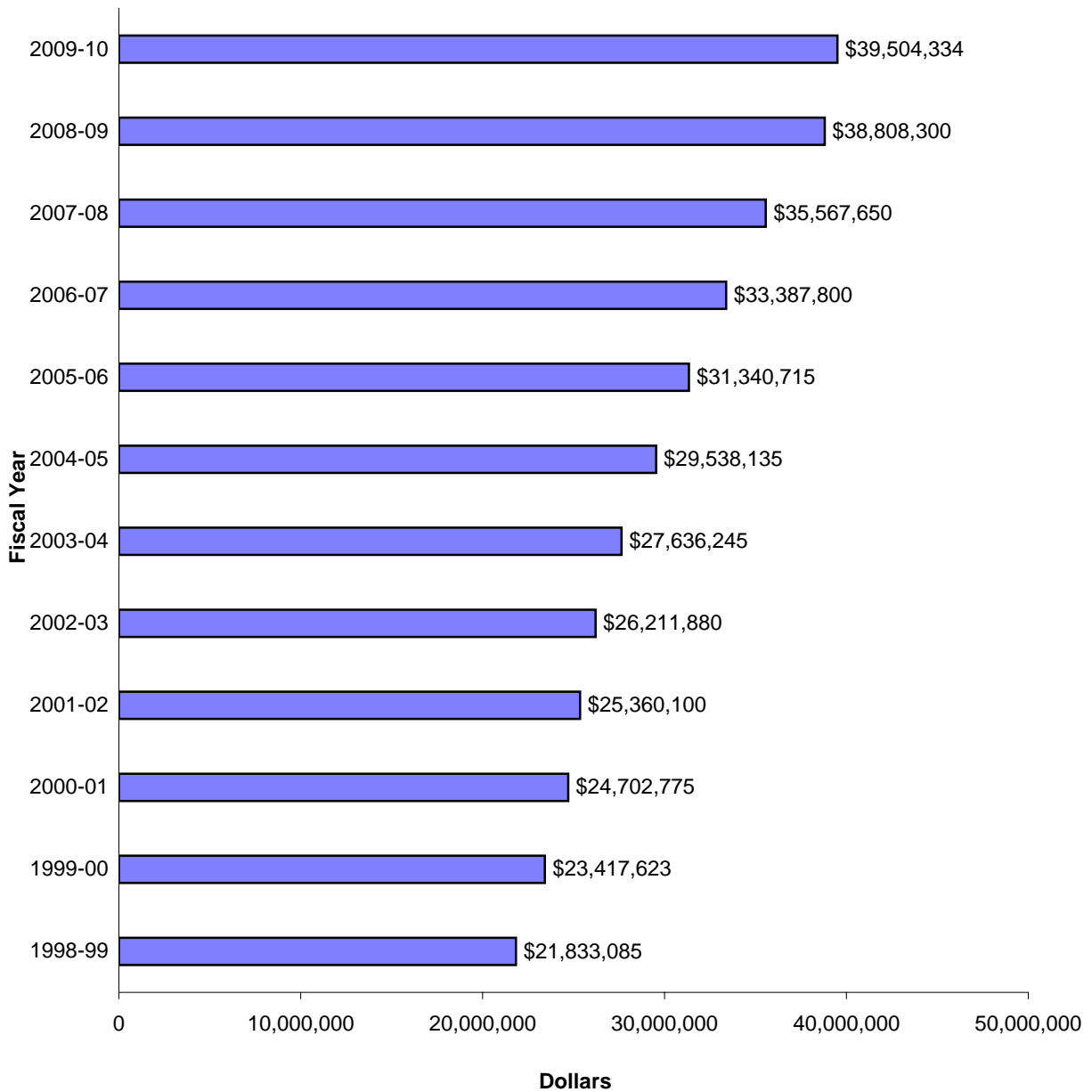
TEN-YEAR HISTORY OF TUITION, ROOM, AND BOARD CHARGES

	2000-01	2001-02	2002-03	2003-04	2004-05	2005-06	2006-07	2007-08	2008-09	2009-10
Per year for 24-36 credits	12800	13310	13910	14745	15630	16530	17520	18600	19740	20730
Comprehensive Fee	<u>230</u>	<u>240</u>	<u>240</u>	<u>250</u>	<u>250</u>	<u>260</u>	<u>270</u>	<u>270</u>	<u>280</u>	<u>350</u>
Commuting Student Total	<b>13,030</b>	<b>13,550</b>	<b>14,150</b>	<b>14,995</b>	<b>15,880</b>	<b>16,790</b>	<b>17,790</b>	<b>18,870</b>	<b>20,020</b>	<b>21,080</b>
Room	3010	3100	3150	3200	3250	3250	3300	3400	3480	3620
Board (Carte Blanche)	<u>2440</u>	<u>2540</u>	<u>2680</u>	<u>2800</u>	<u>2870</u>	<u>3000</u>	<u>3100</u>	<u>3200</u>	<u>3350</u>	<u>3480</u>
Room and Board	5450	5640	5830	6000	6120	6250	6400	6600	6830	7100
Resident Student Total	<b>18,480</b>	<b>19,190</b>	<b>19,980</b>	<b>20,995</b>	<b>22,000</b>	<b>23,040</b>	<b>24,190</b>	<b>25,470</b>	<b>26,850</b>	<b>28,180</b>

TEN-YEAR HISTORY OF % INCREASES IN TUITION, ROOM, AND BOARD CHARGES

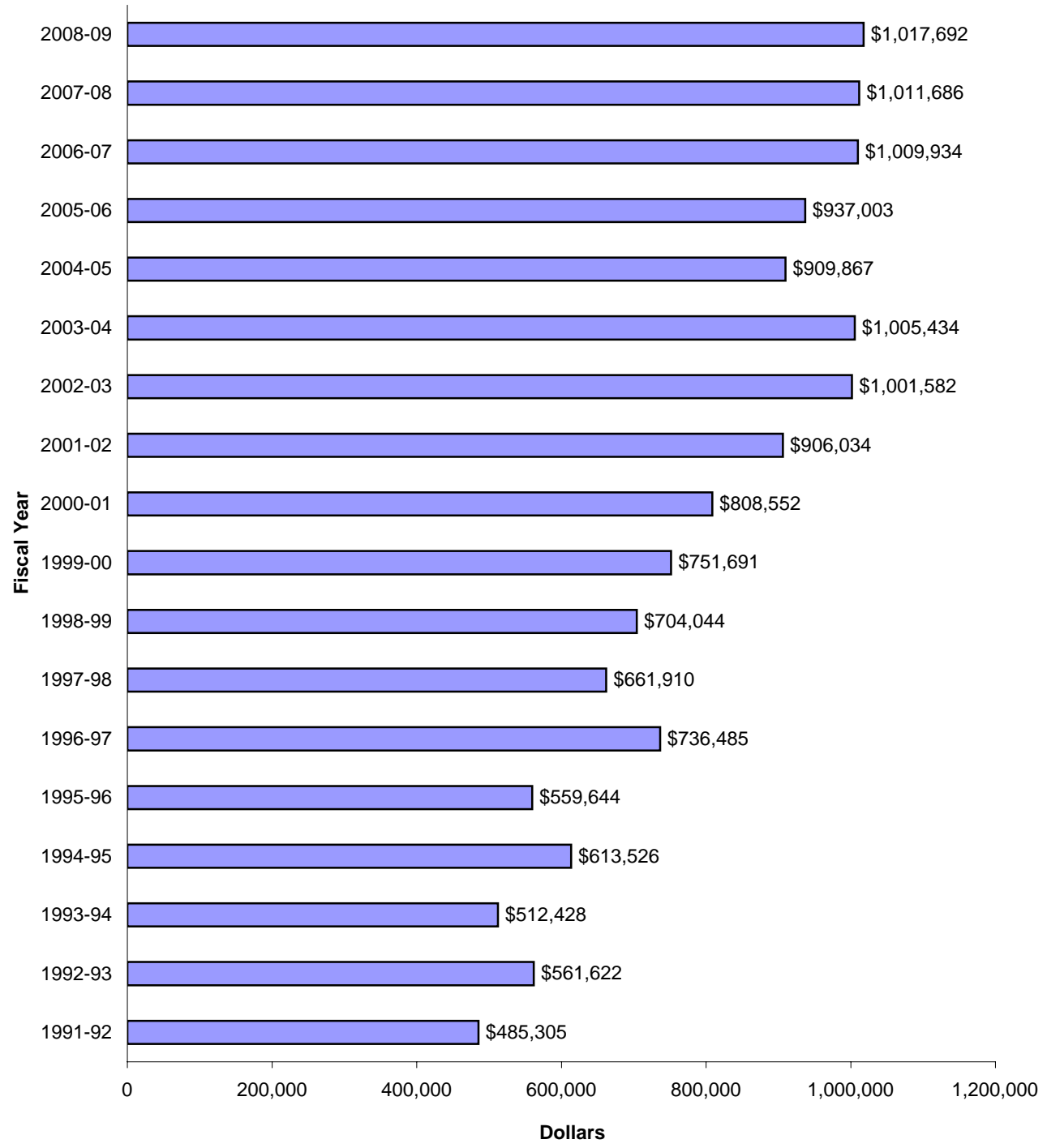
	2000-01	2001-02	2002-03	2003-04	2004-05	2005-06	2006-07	2007-08	2008-09	2009-10
Per year for 24-36 credits	5.34	3.98	4.51	6.00	6.00	5.76	5.99	6.16	6.13	5.02
Comprehensive Fee	<u>0.00</u>	<u>4.35</u>	<u>0.00</u>	<u>4.17</u>	<u>0.00</u>	<u>4.00</u>	<u>3.85</u>	<u>0.00</u>	<u>3.70</u>	<u>25.00</u>
Commuting Student Total	<b>5.25</b>	<b>3.99</b>	<b>4.43</b>	<b>5.97</b>	<b>5.90</b>	<b>5.73</b>	<b>5.96</b>	<b>6.07</b>	<b>6.09</b>	<b>5.29</b>
Room	2.38	2.99	1.61	1.59	1.56	0.00	1.54	3.03	2.35	4.02
Board (Carte Blanche)	<u>5.63</u>	<u>4.10</u>	<u>5.51</u>	<u>4.48</u>	<u>2.50</u>	<u>4.53</u>	<u>3.33</u>	<u>3.23</u>	<u>4.69</u>	<u>3.88</u>
Room and Board	3.81	3.49	3.37	2.92	2.00	2.12	2.40	3.13	3.48	3.95
Resident Student Total	<b>4.82</b>	<b>3.84</b>	<b>4.12</b>	<b>5.08</b>	<b>4.79</b>	<b>4.73</b>	<b>4.99</b>	<b>5.29</b>	<b>5.42</b>	<b>4.95</b>

## Total Budget for Fiscal Years 1998-99 to 2009-10

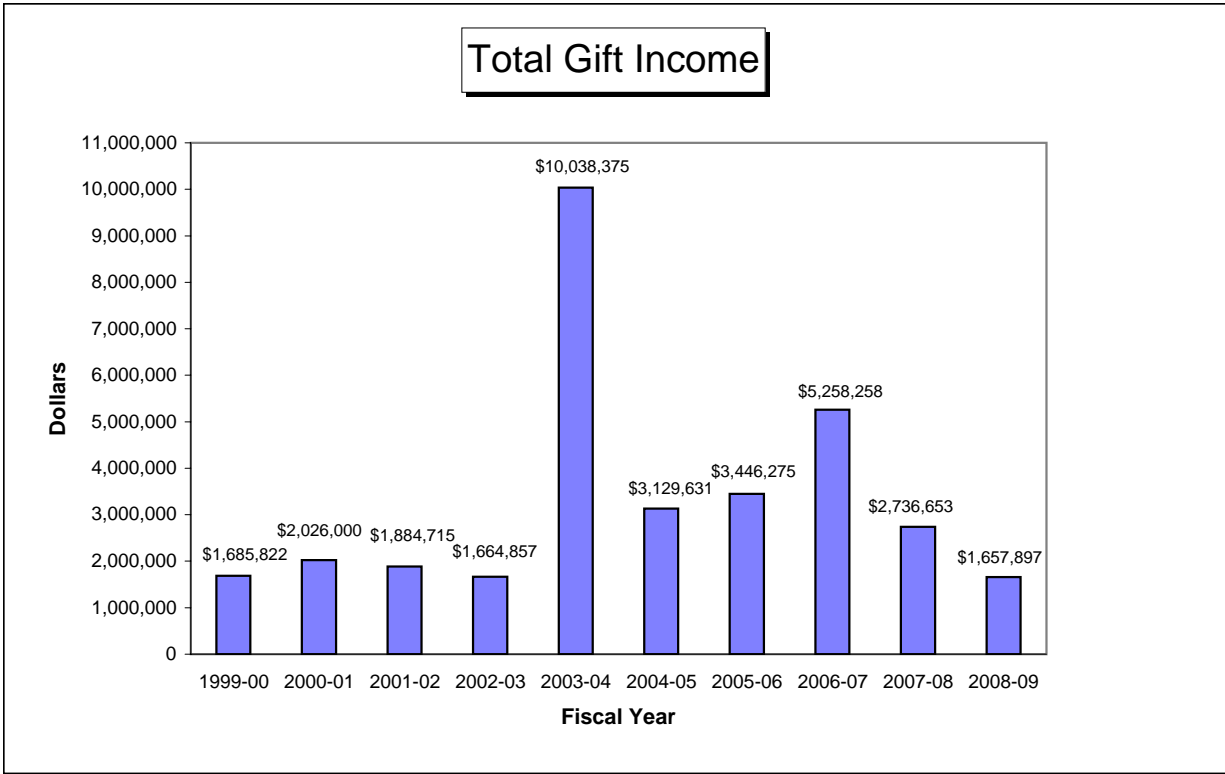


■ Budget = Gross Revenue Less Institutional Student Financial Aid

**The Malone Fund Gift Income  
for Fiscal Years 1991-92 to 2008-09**



■ Unrestricted Giving



Note: The 2003-04 amount includes \$8,163,229 (81% of total) for the Endowment/Capital Campaign.

